

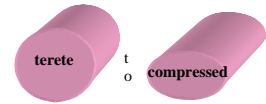
Ahnfeliopsis fastigiata
Lewis & Womersley

45.340

Techniques needed and shape



**MACRO
PLANT**



Classification

Phylum: Rhodophyta; Order: Gigartinales; Family: Phylloporaceae
gristly fine threads

*Descriptive name

Features

1. plants 10-40mm tall, red-brown, bleaching yellow
2. branches **gristly**, irregularly branched or partly forked, **wiry**, about 0.4mm across
3. mature female structures (cystocarps) form minute swellings in the upper branches

Occurrences

Usual Habitat

Special requirements



Victoria and N Tasmania

on rock in intertidal pools or shallow water



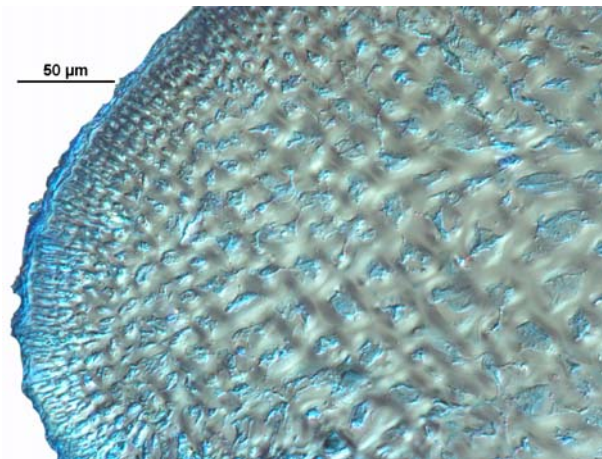
1. cut a cross section to find a core (medulla) of **large, egg-shaped** cells in vague rows with numerous cross-connections and outer layers (cortex) of **strings** of 3-8 **small** outward facing cells
2. if possible cut a cross section through a cystocarp to find central **star-shaped** cells and separate bunches of carposporangia in the medulla

Similar Species

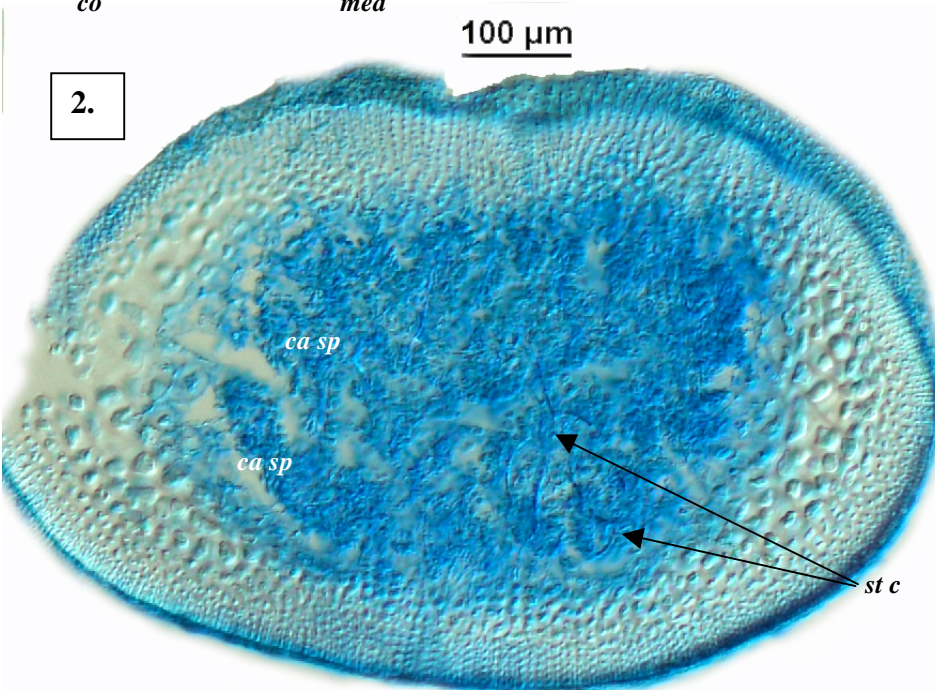
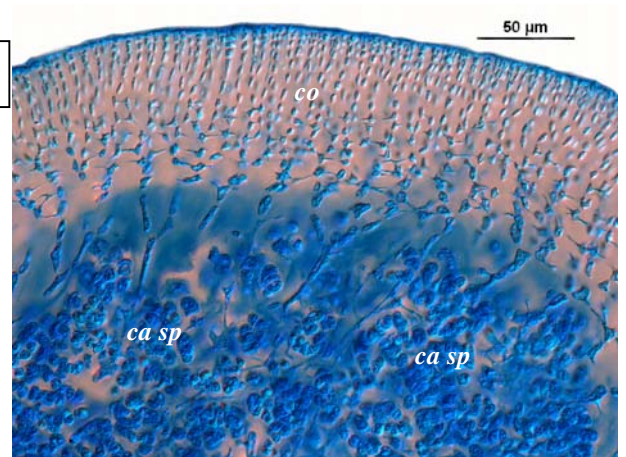
Gymnogongrus griffithsiae, but *A. fastigiata* is more cylindrical and no warty blisters containing tetrasporangia are present

Description in the Benthic Flora Part IIIA, pages 265–266

Details of Anatomy



1. 3.



Cross sections of *Ahnfeliopsis fastigiata* stained blue and viewed microscopically, showing:

1. large core cells (medulla, *med*) in vague rows and outer chains of small cells (cortex, *co*) (A18391 slide 7897)
2. a cystocarp embedded in the medulla of a slightly compressed branch, with star-shaped cells (stellate cell, *st c*) visible amongst the bunches of carposporangia (*ca sp*) (A18391 slide 7897)
3. detail of part of a cystocarp (A27731 slide 12179)

* Descriptive names are inventions to aid identification, and are not commonly used
Prepared September 2005, additions September 2009

4.



5.



4, 5. Two magnifications of drift plants of *Ahnfeltiopsis fastigiata* Lewis & Womersley (A62428) from Port Lonsdale, Victoria

* Descriptive names are inventions to aid identification, and are not commonly used
Prepared September 2005, additions September 2009