

Techniques needed and shape



**MACRO
PLANT**

Classification

Division: Rhodophyta; Family: Delesseriaceae; Tribe: Delesserioideae

*Descriptive name

One-sided Mesh Plant (referring to the delicate net pattern of branching)

Features



plants red to grey-red, 200-400 mm tall, of delicate, one-sided net-like blades on curved stalks, 50-150 mm long and 10-30 mm wide

Variations

edges of the net may be frayed

Special requirements

easily recognised because of its unique net-like or mesh pattern

Occurrences

from central W Australian coasts to N Tasmania, also Indian Ocean and Brazil

Usual Habitat

on rock, often near sand, in good current flow

Description in the Benthic Flora Part IIID , pages16-20

Details of Anatomy

1.



2.



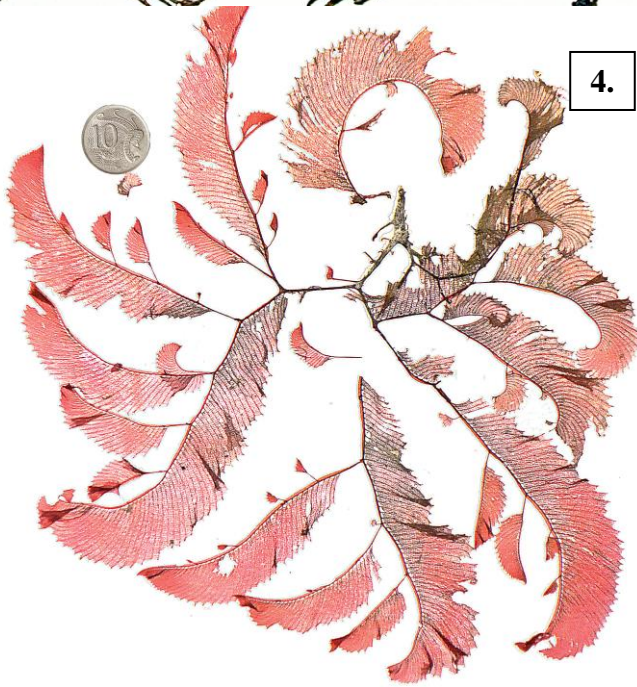
Claudea elegans viewed microscopically

1. branching pattern near an apex: stalk, filament rows (*f*); ranks of cells (*ra*) forming the cross-bars of the mesh (slide 17170)
2. dark field microscopy of a fertile mesh: cross bars expanded into oval structures (arrowed) bearing tetrasporangia (slide 17169)



3.

Claudea elegans
 Lamouroux
 from S Australia
 3. off Troubridge Light,
 Gulf St Vincent, 17 m
 deep, on limestone
 (A33415)
 4, 5. Head of the Great
 Australian Bight



4.

5.



* Descriptive names are inventions to aid identification, and are not commonly used
 "Algae revealed", R N Baldock, State Herbarium S Australia, March 2003; additions August 2007, revised August 2014