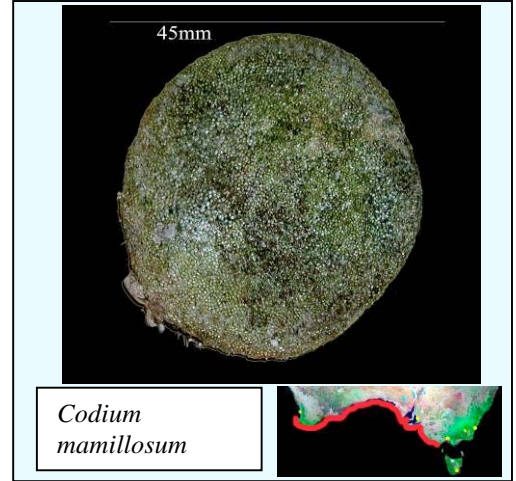
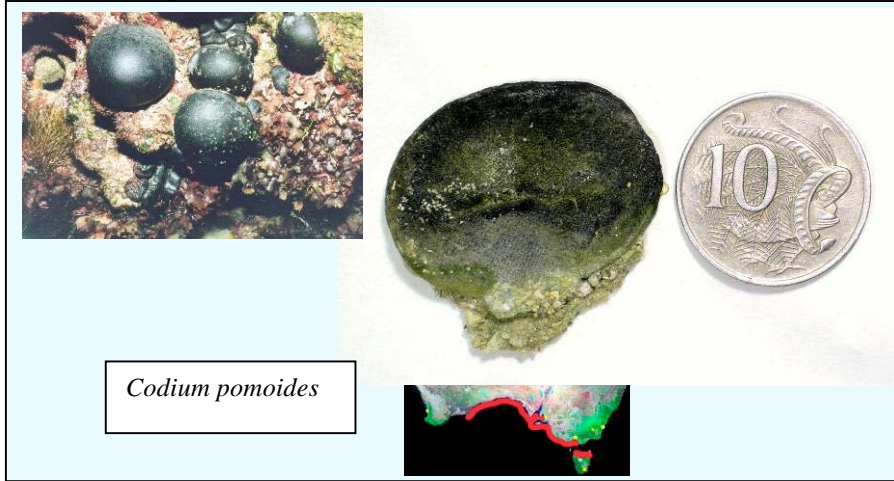


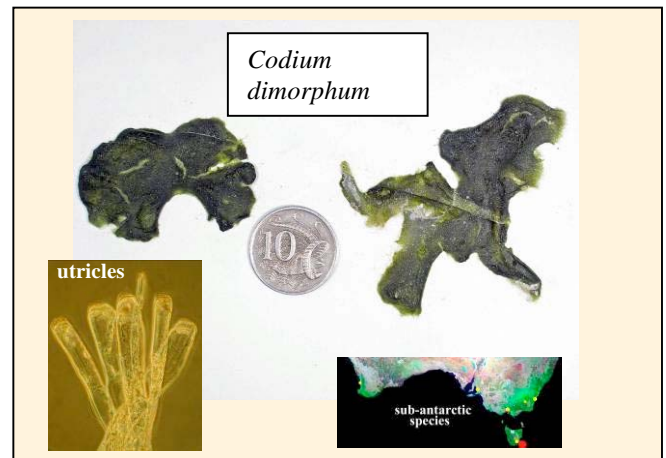
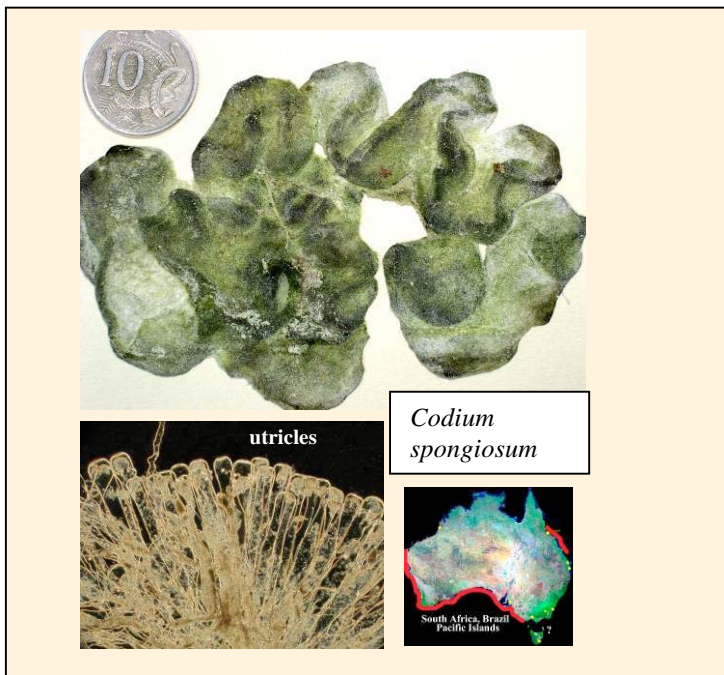
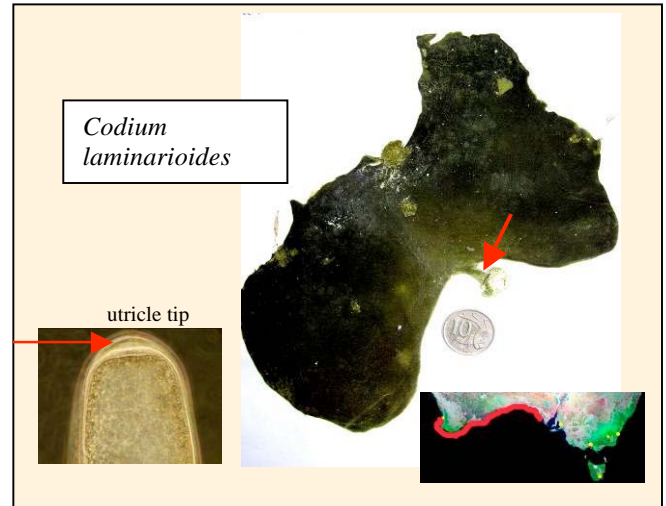
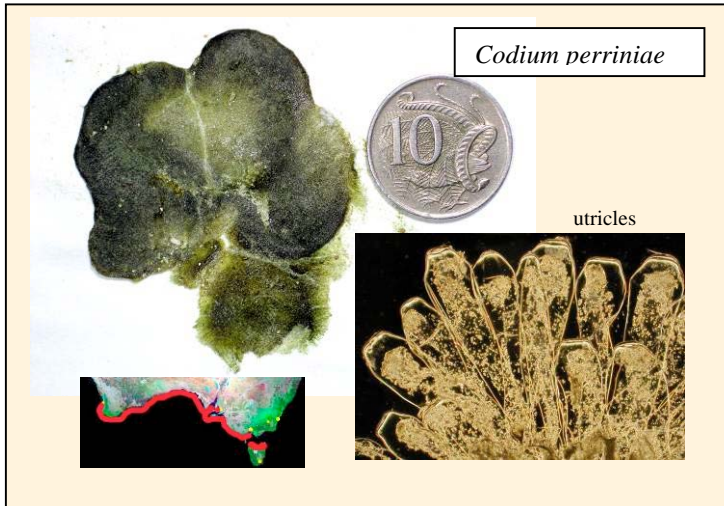
SOUTHERN AUSTRALIAN SPECIES OF *CODIUM* AT A GLANCE

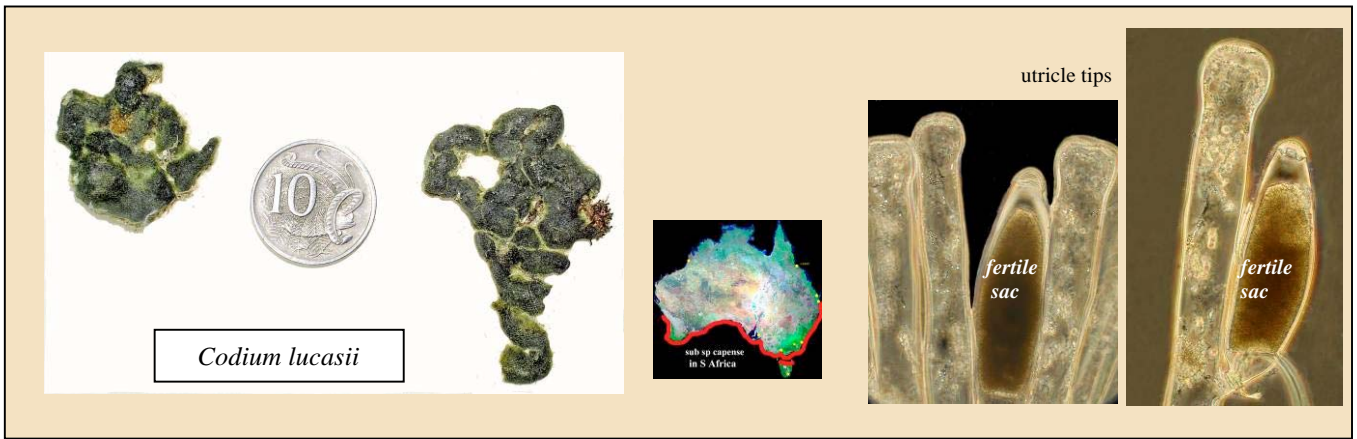
The 10c piece used as a scale is 24mm across or almost 1 inch in diameter. For correct identification, microscopic investigation of the outermost parts (utricles) is necessary for most species. Red arrows below point to a feature distinctive to the species

I. Ball-shaped

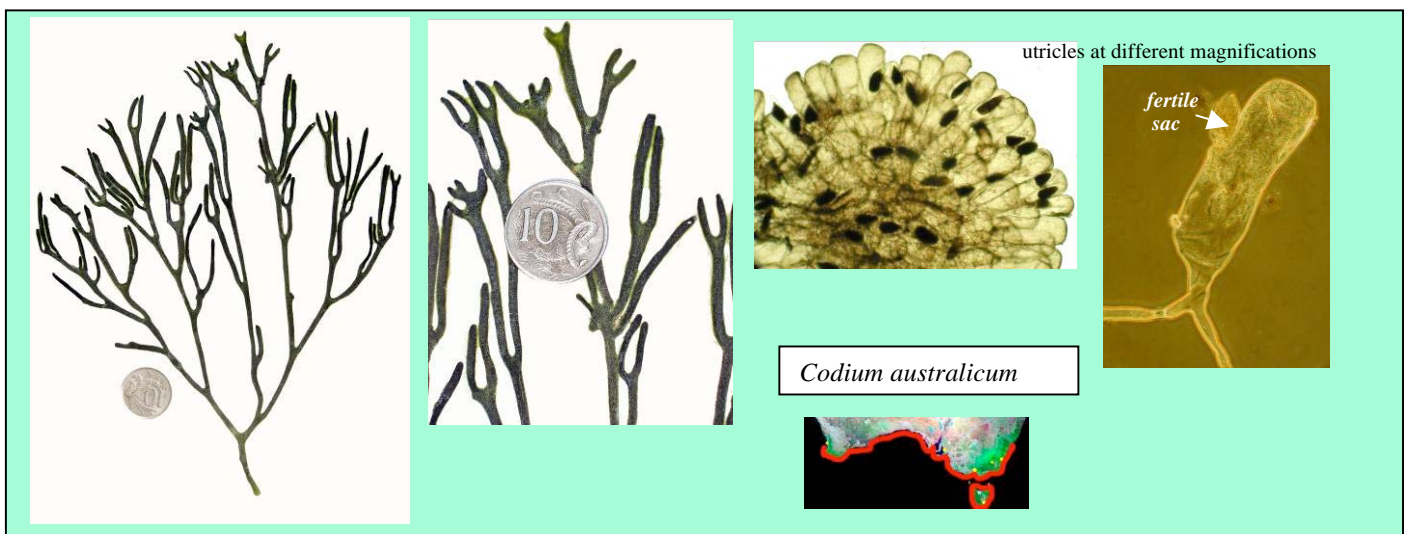
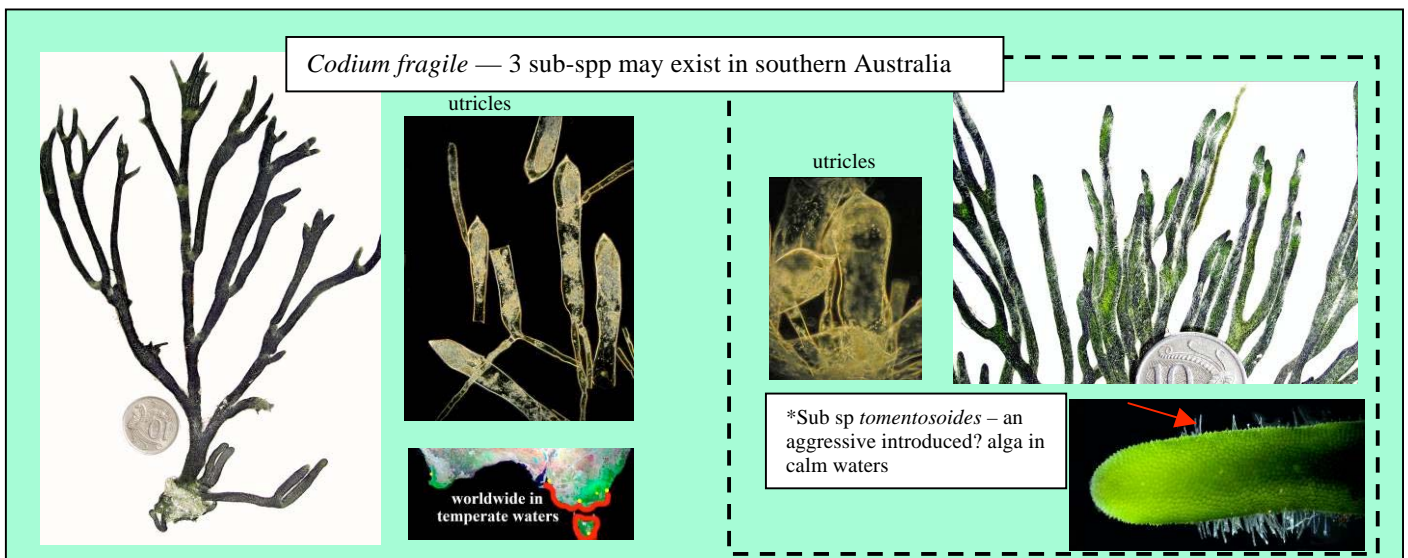



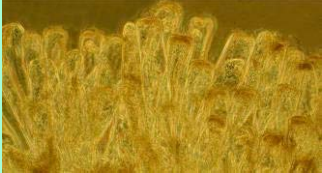
II. Thallus cushion-shaped or broad and flat






III. Branches cylindrical, forked








utricles at different magnifications

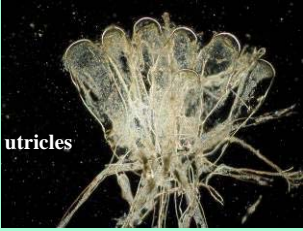


also S. Africa



Codium duthieae


Codium galactum






utricles

utriculus tips




Codium harveyi








fertile sac

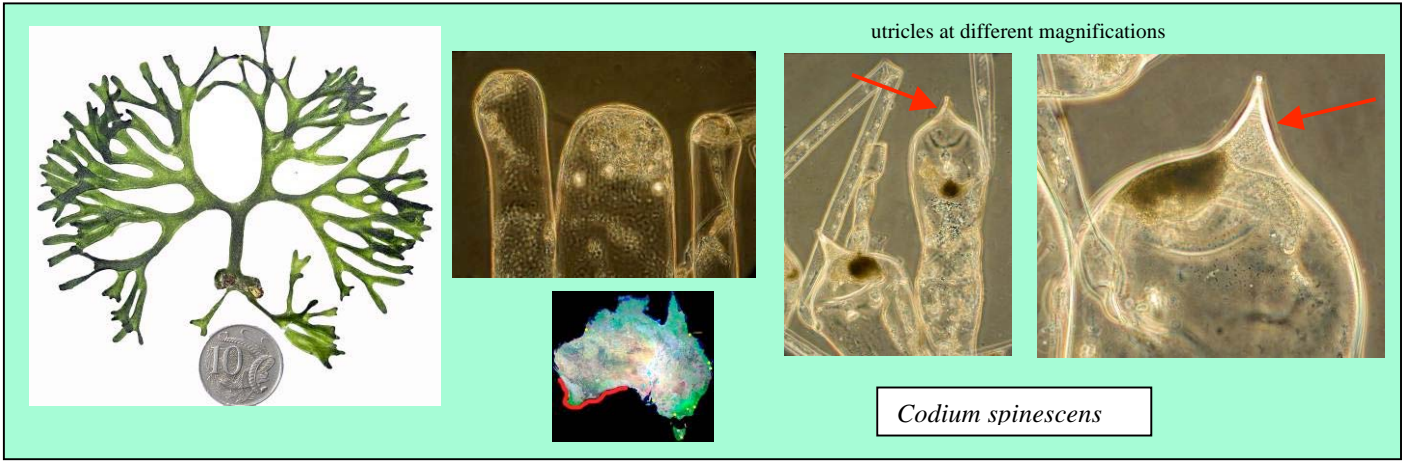
utricles at different magnifications



Codium muelleri

utricles at different magnifications



Rare species

