

***Crassilingua marginifera***  
(J Agardh) Papenfuss

45.880

**Techniques needed and shape**



**Classification**

Division: Rhodophyta; Family: Delesseriaceae; Tribe: Nitophylloideae  
Group: *Phycodrys*

**\*Descriptive name**

Flanged Cellophane Plant

**Features**

plants dark red to red-brown 50-200 mm tall, of **filmy**, narrow, **strap-like** blades about 6 mm wide, branching from the **margins**, edges smooth, mid-line vein **broad** with flange-like wings, side veins **absent**; side branches narrow basally; sometimes numerous short, branchlets (**proliferations**) grow from inside margins specimens from West I. have small conical growths at the edges of blades

**Variations**



**Special requirements**



view microscopically to find

1. in surface view: single, microscopic apical cells producing lines of cells later thickened into midline veins; smooth blade edges; in sporangial plants, patches (sori) of tetrasporangia forming **upraised** bumps on blade surfaces
2. in cross sections through blades: thickened **edges** and midrib of many cell rows from S Australia to Tasmania

**Occurrences**  
**Usual Habitat**

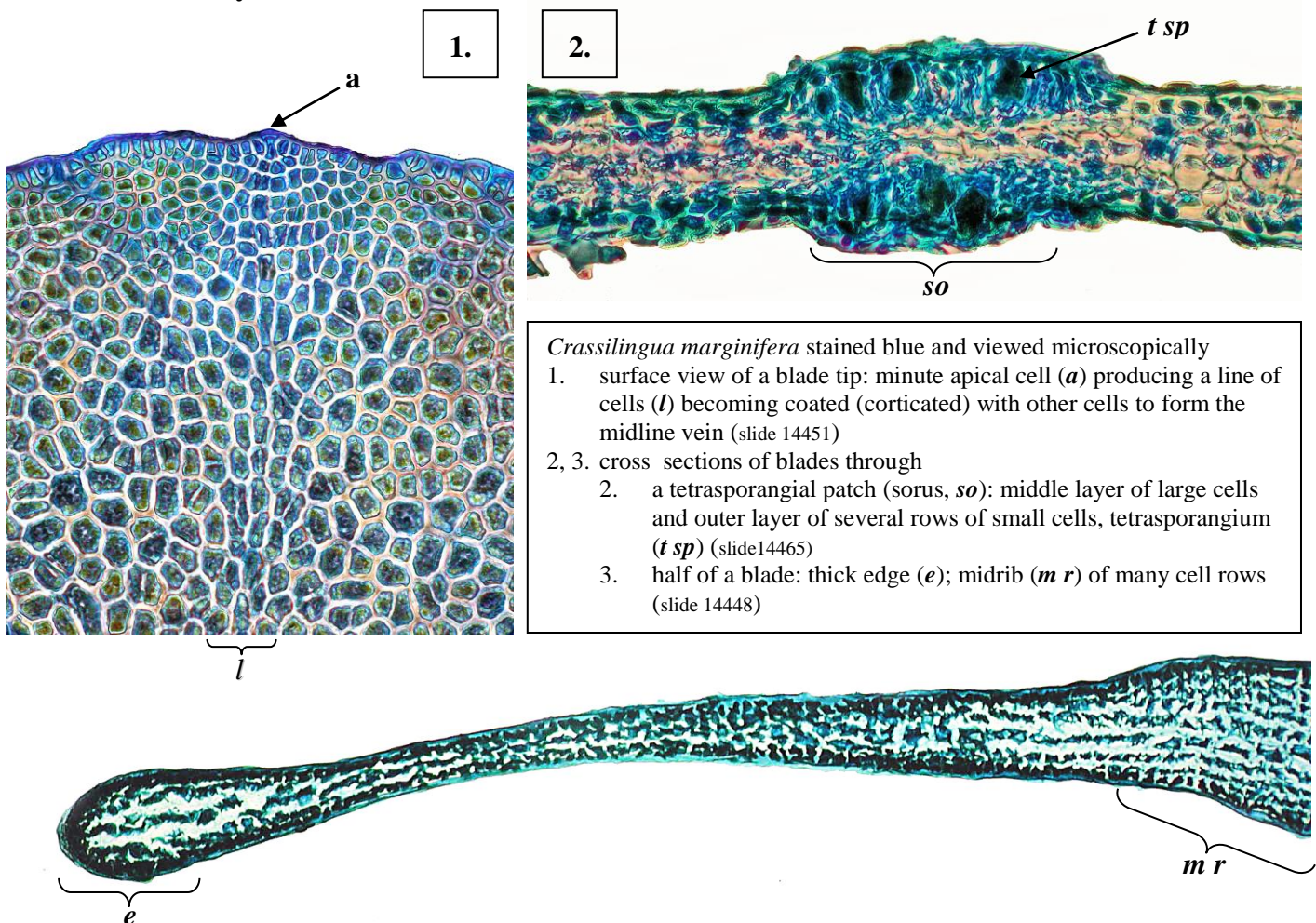
on rock, in rough water, at depth or in shaded shallow waters

**Similar Species**

*Heterodoxia denticulata* also appears “flanged” but has definite stalks and blade edges have branched teeth

**Description in the Benthic Flora** Part IIID, pages 80-83

**Details of Anatomy**



*Crassilingua marginifera* stained blue and viewed microscopically

1. surface view of a blade tip: minute apical cell (**a**) producing a line of cells (**l**) becoming coated (corticated) with other cells to form the midline vein (slide 14451)
- 2, 3. cross sections of blades through
  2. a tetrasporangial patch (sorus, **so**): middle layer of large cells and outer layer of several rows of small cells, tetrasporangium (**t sp**) (slide 14465)
  3. half of a blade: thick edge (**e**); midrib (**m r**) of many cell rows (slide 14448)

\* Descriptive names are inventions to aid identification, and are not commonly used

“Algae revealed, R N Baldock, State Herbarium S Australia, March 2003; additions August 2007; edited May 2014



*Crassilungia marginifera* (J Agardh) Papenfuss, A23020; drift plants from Robe, S Australia,  
the lower specimen with proliferous short branchlets

\* Descriptive names are inventions to aid identification, and are not commonly used  
“Algae revealed, R N Baldock, State Herbarium S Australia, March 2003; additions August 2007; edited May 2014