

SOUTHERN AUSTRALIAN SPECIES OF CYSTOCLONIACEAE AT A GLANCE

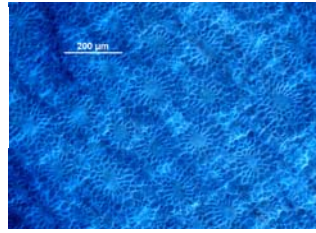
I. branches flat, foliose

IA. veins visible, surface cells in distinct ring-patterns (rosettes)



blades fringed

microscope, blue stained surface views



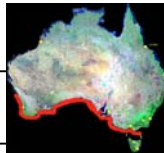
Craspedocarpus ramentaceus



Craspedocarpus venosus



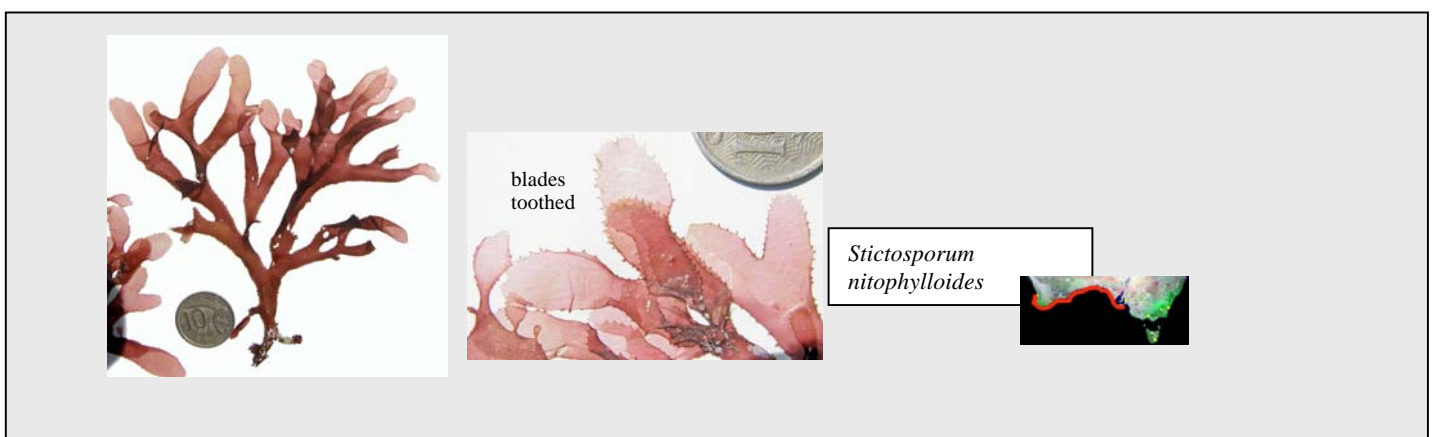
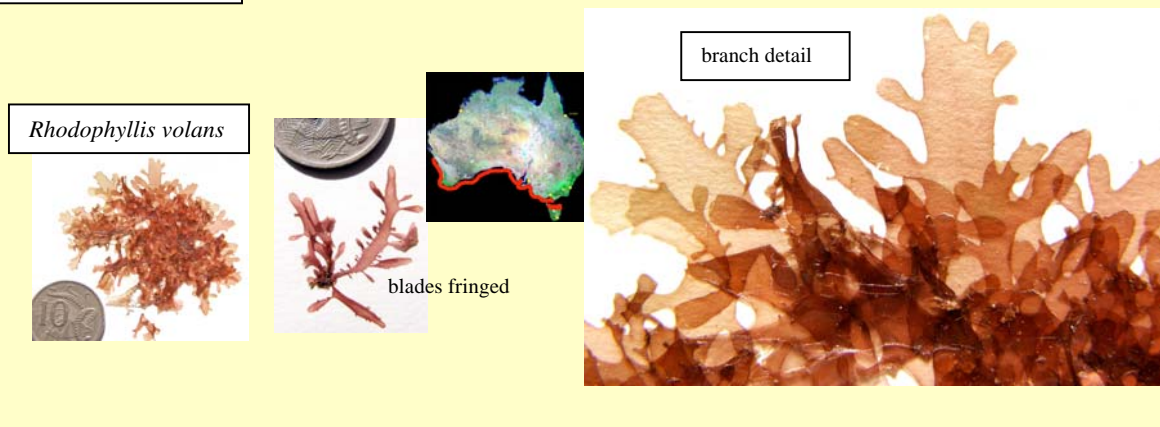
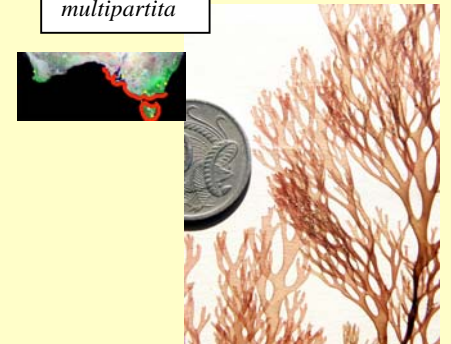
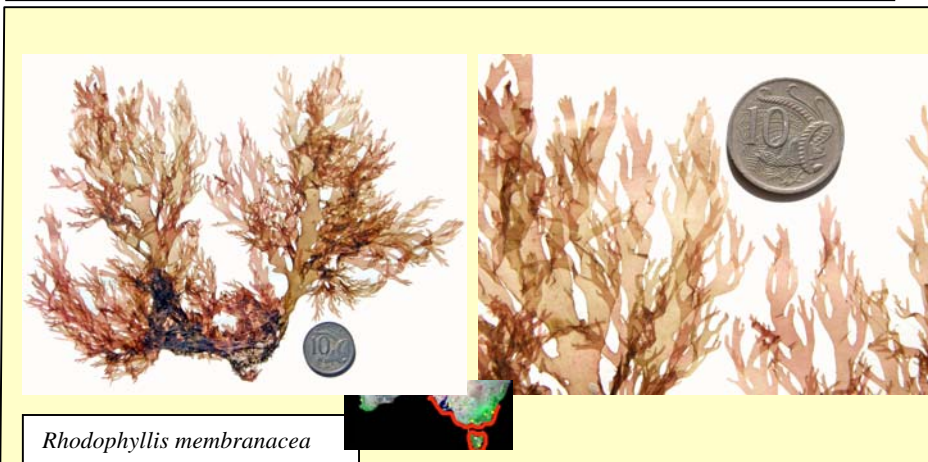
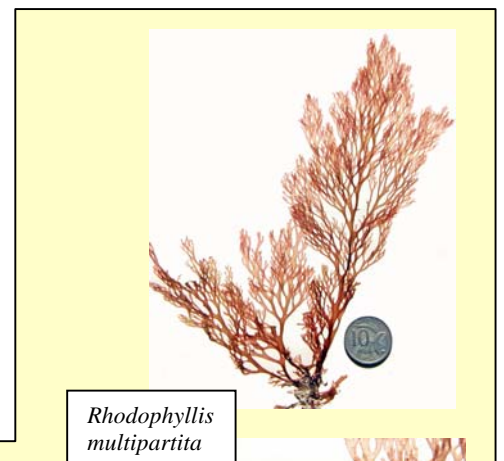
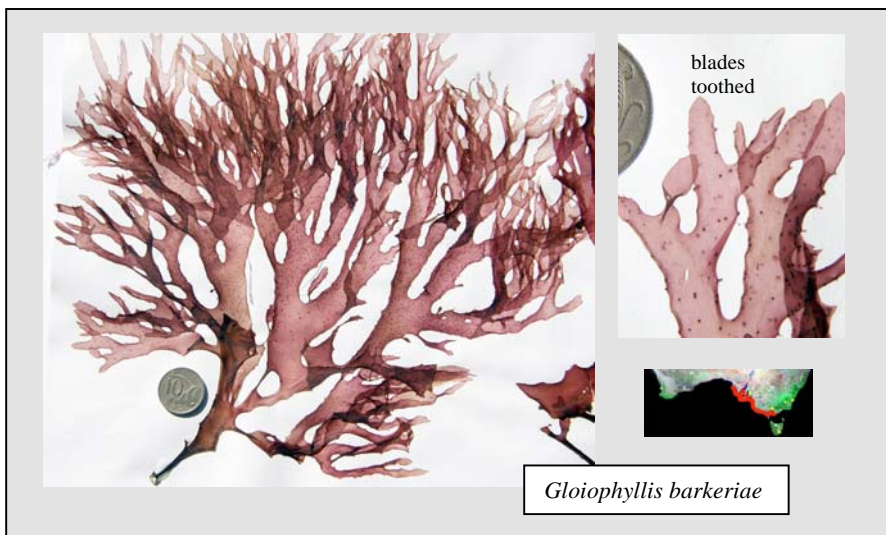
Craspedocarpus blepharicarpus



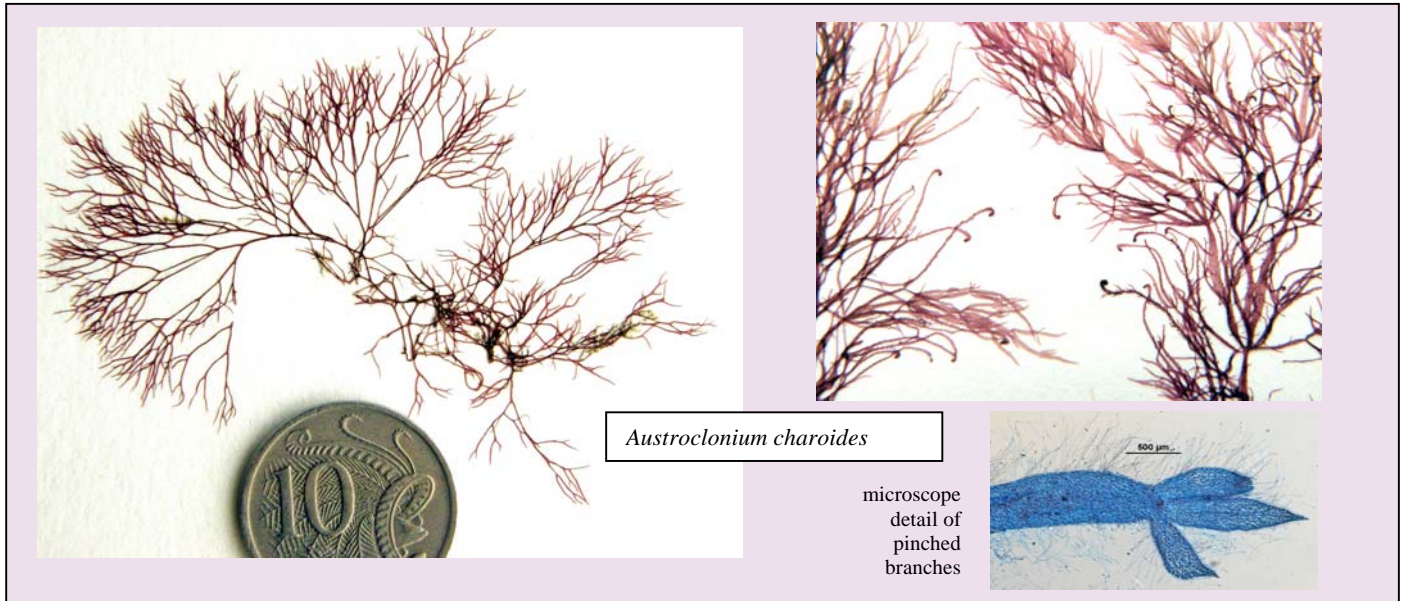
Craspedocarpus tenuifolius



IB. veins and surface cell rosettes weakly developed or absent



II. branches pinched into segments



III. branches thin & cylindrical

IIIa. surface cells not in obvious rings (rosettes)



IIIb surface cells in rings (rosettes)

