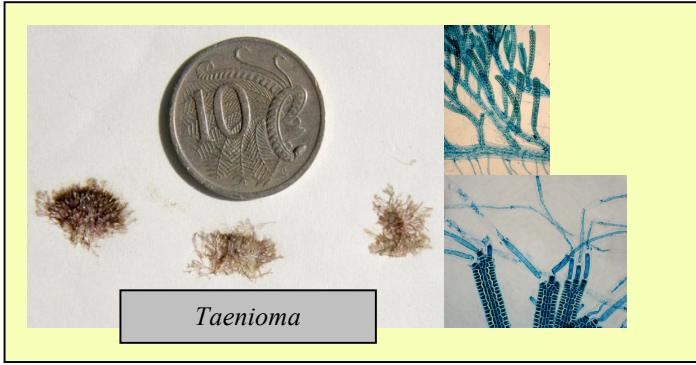


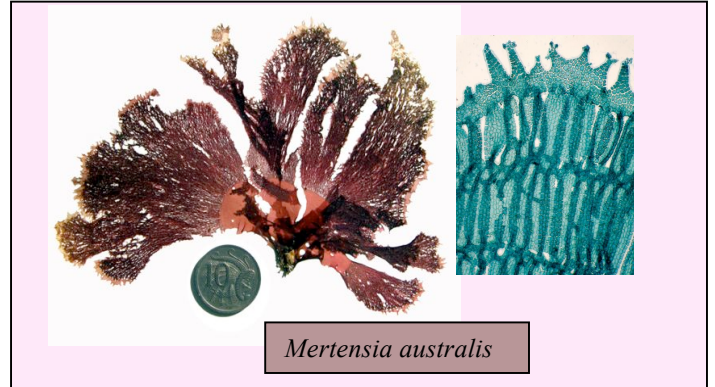
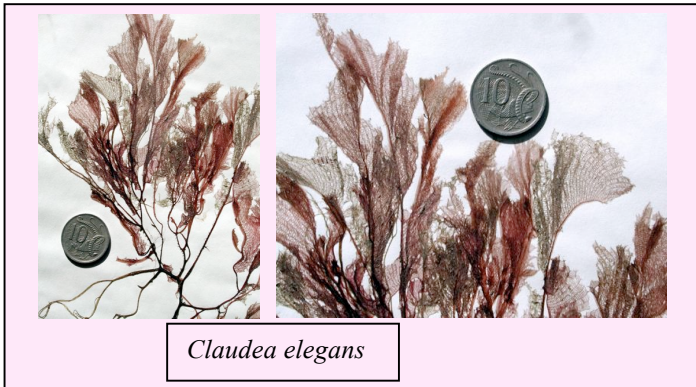
DELESSERIACEAE OF SOUTHERN AUSTRALIA AT A GLANCE

((microscope views are in blue; the coin scale is 24mm or almost 1" wide))

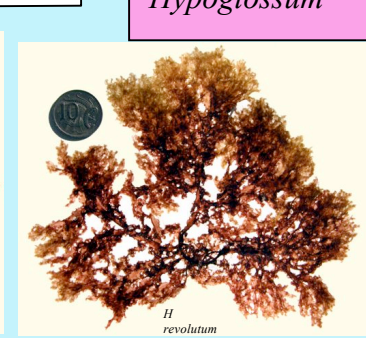
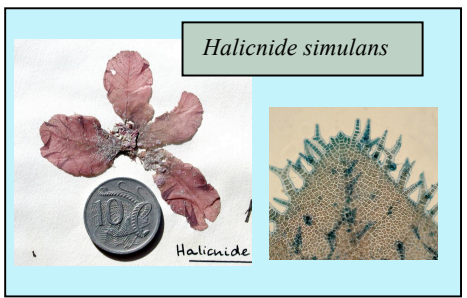
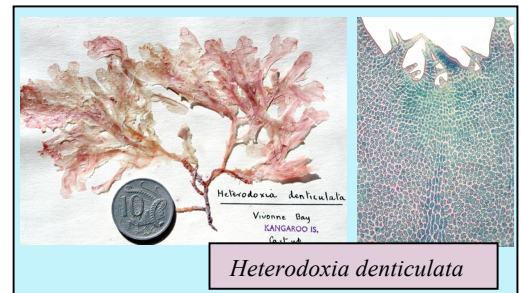
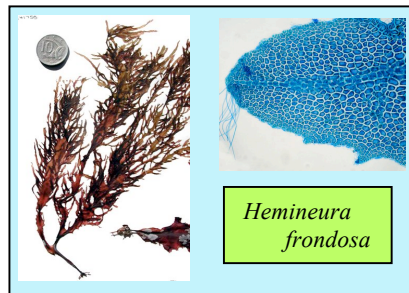
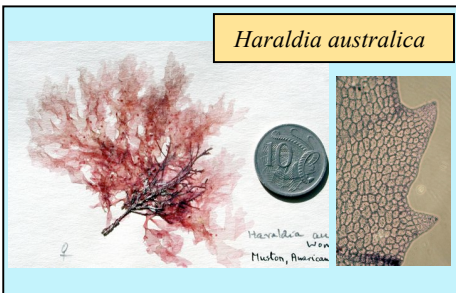
I. plants tiny, with linear, flat blades



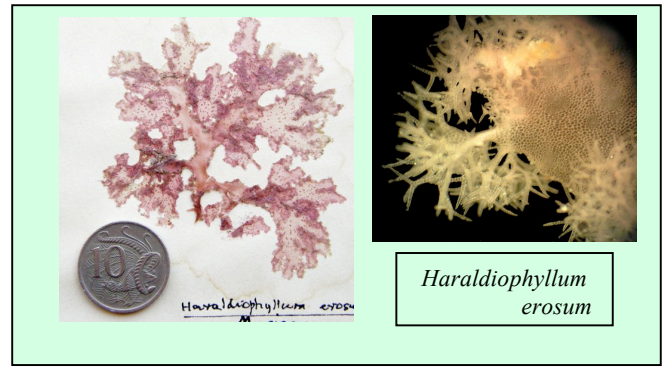
II. plants with net-like parts



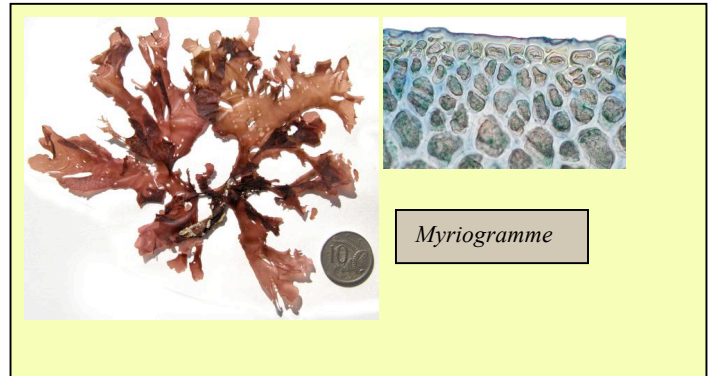
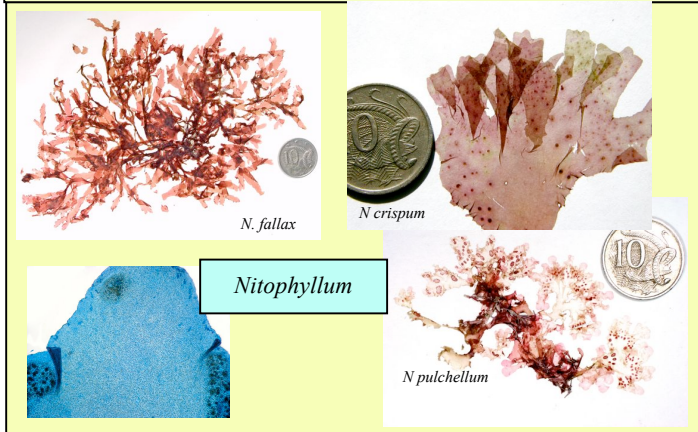
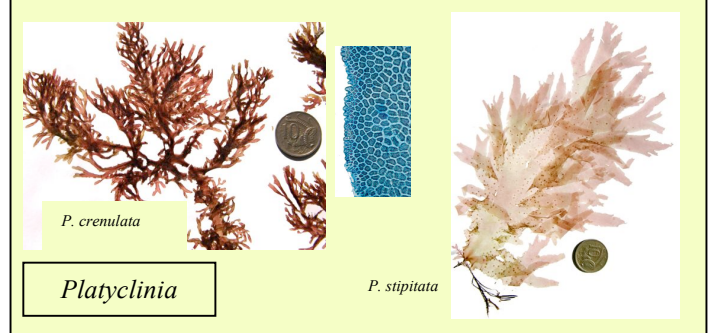
III. plants with microscopic teeth or spines on the margins of blades or at the tips



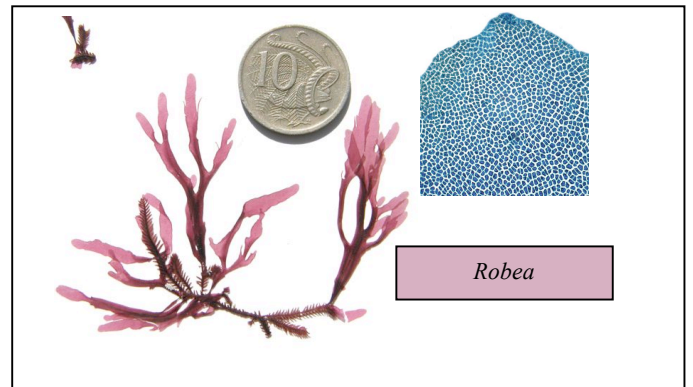
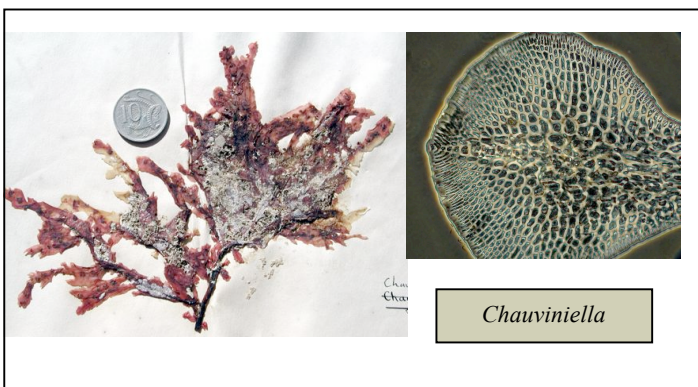
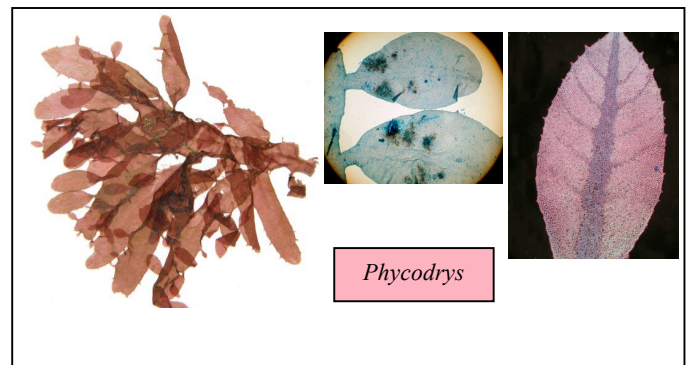
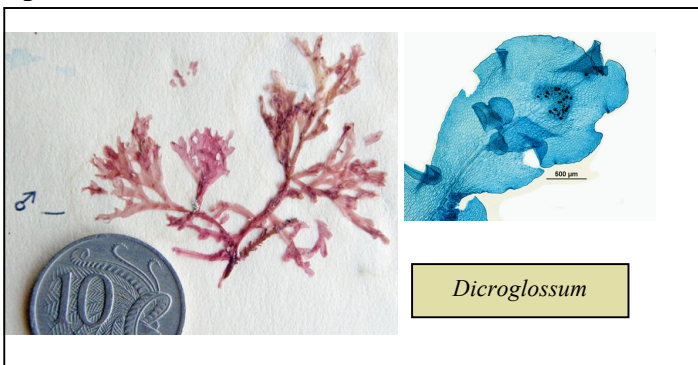
IV. plants with microscopic teeth or spines on the margins of blades or at the tips (continued)



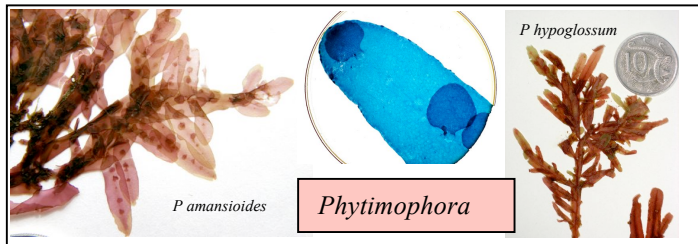
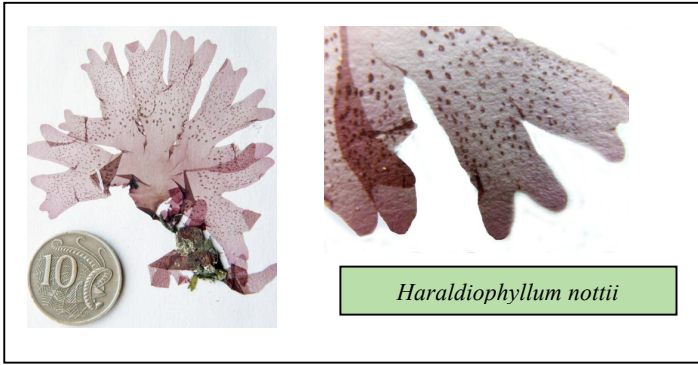
V plants are smooth edged with no veins



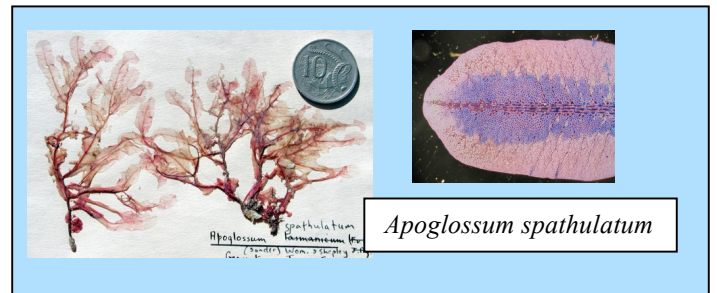
VI plants have a mid-rib vein



VI plants have a mid-rib vein (continued)



VII. plants are smooth edged and have faint veins



VIII. plants with small, twisted, hooked blades

