



Techniques needed

Classification

Phylum: Chlorophyta; Order: Ulvales; Family: Ulvaceae

***Descriptive name**

silky sea lettuce

Features


plants, green, broad *paddle-shaped*, 20-100mm tall with a *silky surface*, on a *short* stalk rapidly widening to a blade smooth or ruffled on edges

Special requirements

view the surface of branches microscopically to find

1. cells **angular**, square or rectangular, relatively **large** (16-22µm long), in **lines** or in arcs around growing centres
2. chloroplasts containing a **single** bright body (pyrenoid) (2 if the cell is dividing)
3. cross sections show 2 cell layers separated by a narrow cavity **only at the blade edge**



 Diagnosis can be difficult

Occurrences

Usual Habitat

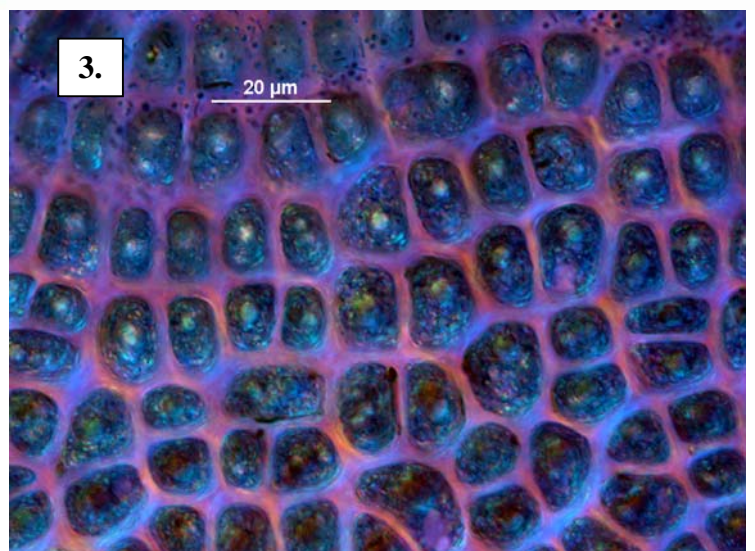
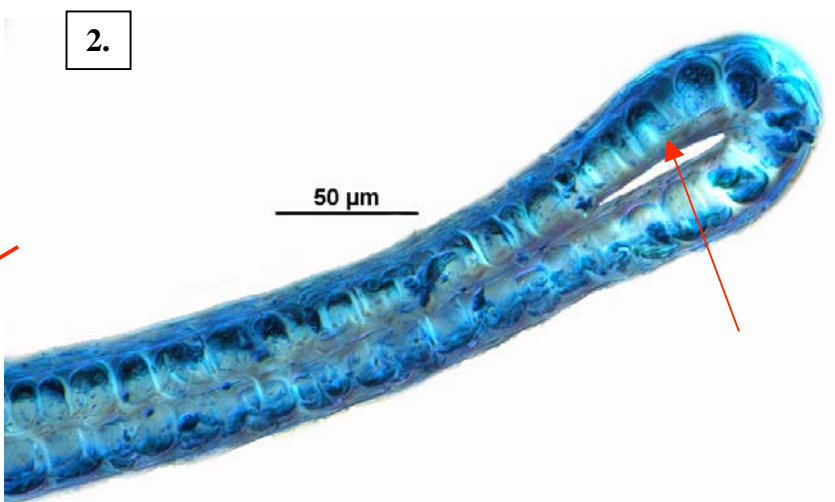
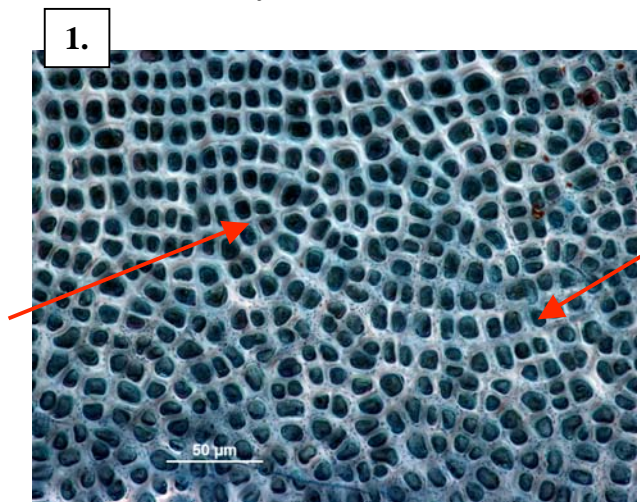
S Australia and Port Phillip, Victoria; doubtfully from Tasmania and NSW on Tape grass, *Posidonia*, probably restricted to coasts with moderate wave movement

Similar Species

the flat, blade form of *Enteromorpha compressa*, but cells are smaller and only in short lines in that species

Description in the Benthic Flora Part I, pages 153, 155-157

Details of Anatomy



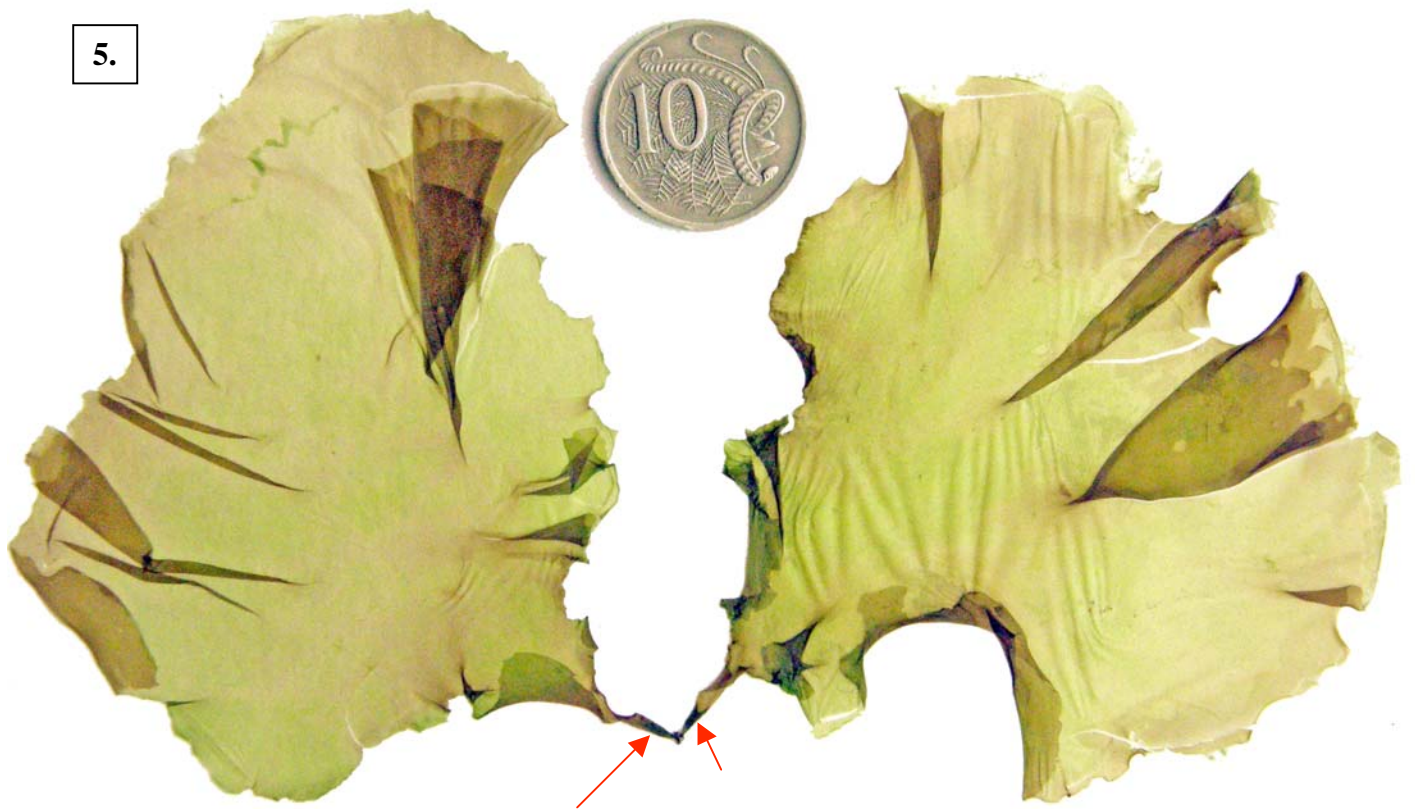
Enteromorpha linza stained blue and viewed microscopically to show:-

1. cells in lines, some forming arcs around growing points (arrowed) (A53344 slide 20780)
2. a cross section showing the 2 cell layers of rectangular cells practically touching except at the very edge where a narrow cavity exists (arrowed) (A53312 slide 7586)
3. a surface view of cells showing the single bright spot (pyrenoid) in each chloroplast, enhanced by Nomarski interference technique (A53344 slide 20780)

4.



5.



Specimens of *Enteromorpha (Ulva) linza* (Linnaeus) J Agardh, (short stalks arrowed)
4. on *Posidonia*, 1.5m deep, Rosetta Bay, Victor Harbor, S Australia (A42719)
5. 0-1.0m deep, Port Phillip, Victoria (A53344)

* Descriptive names are inventions to aid identification, and are not commonly used
“Algae Revealed” R N Baldock, S Australian State Herbarium, March 2009, additions October 2009