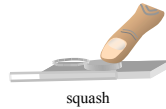


**Techniques needed and plant shape**



MICRO  
PLANT

**Classification**

Phylum: Rhodophyta; Order: Nemiales; Family: Scinaiceae  
(as Family: Galaxauraceae in the Flora).

Huisman (Algae of Australia: Nemiales, 2006) placed members of Galaxauraceae lacking lime into the new Family: Scinaiceae)

**Descriptive name**

\*rosy threads

**Features**

usually below low water; plants small, ~ 30 mm tall, rose-red, much-branched, main branches ~ 2 mm wide, cylindrical, forked, covered with short irregular side branches (no image of the whole plant is available below)

**Special requirements**



squash a piece of main branch and view microscopically to find the *narrow* core (medulla) of threads and relatively *wide* outer layer (cortex) of coloured ovoid cells in branched *chains*, pointing outwards

**Occurrences**

Pt Phillip Heads, Victoria

**Usual Habitat**

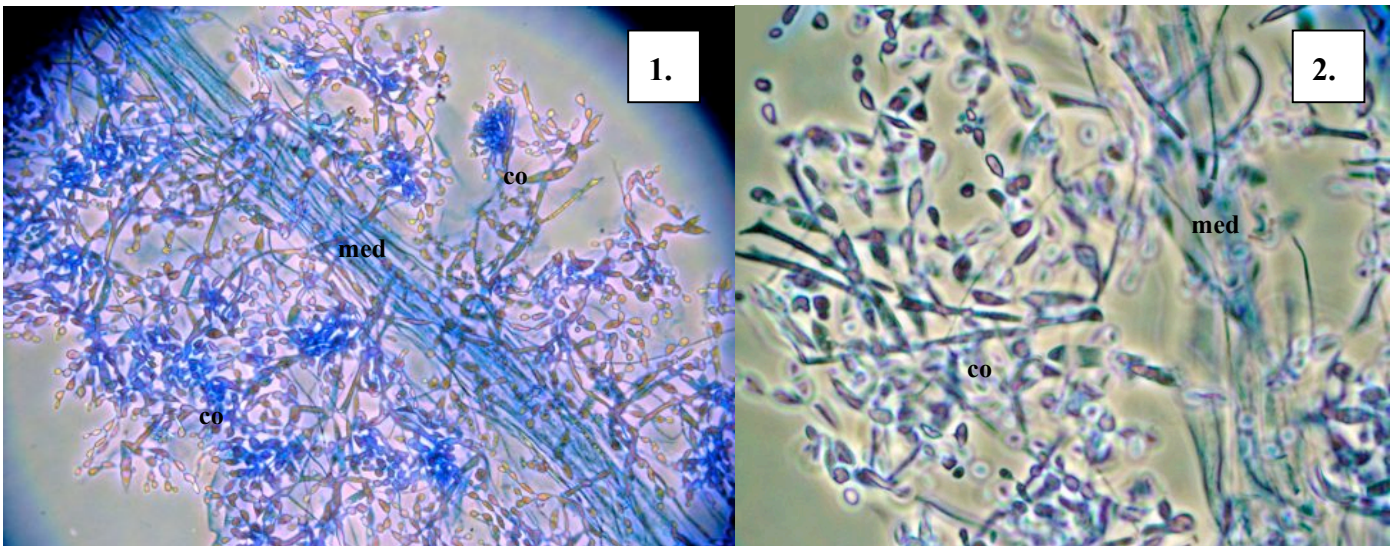
only known from the original (type) collection

**Similar Species**

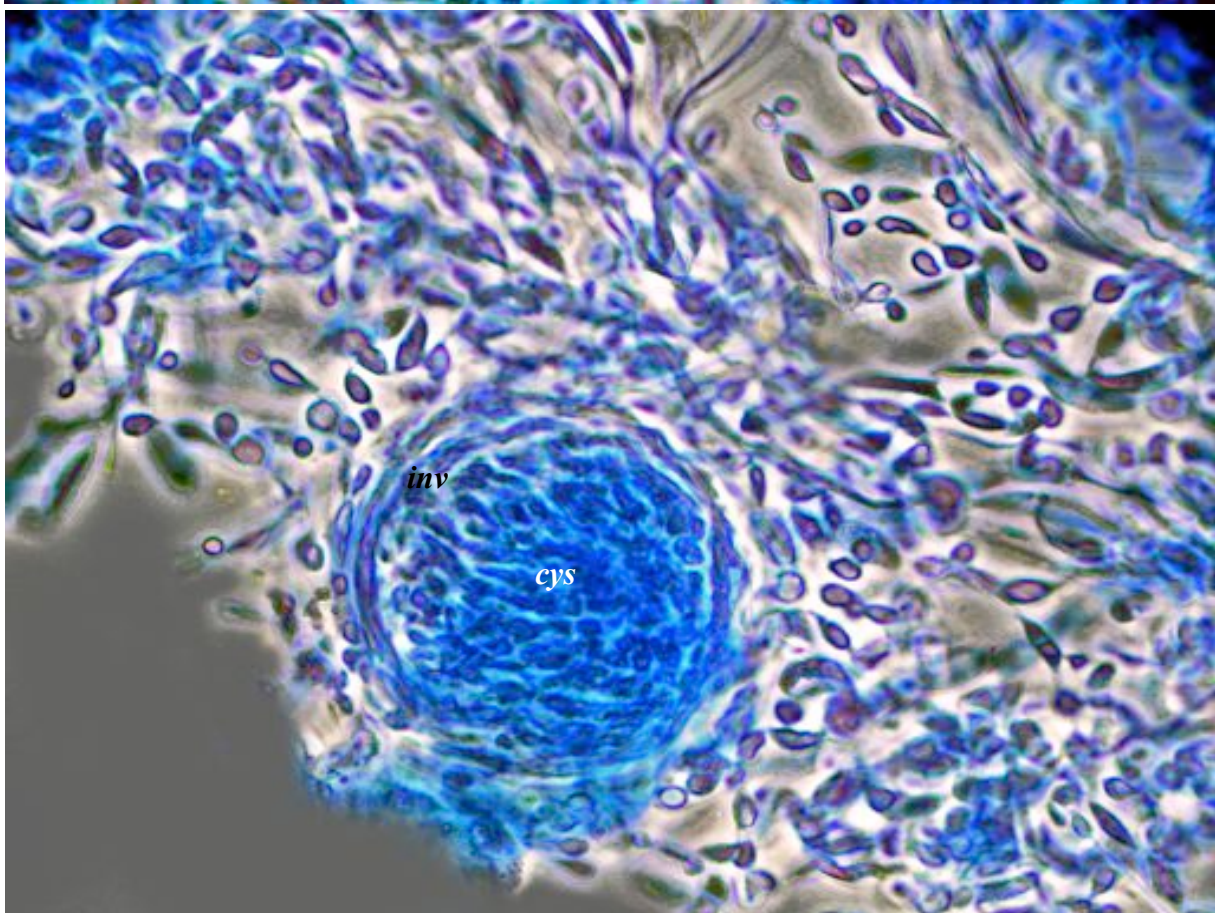
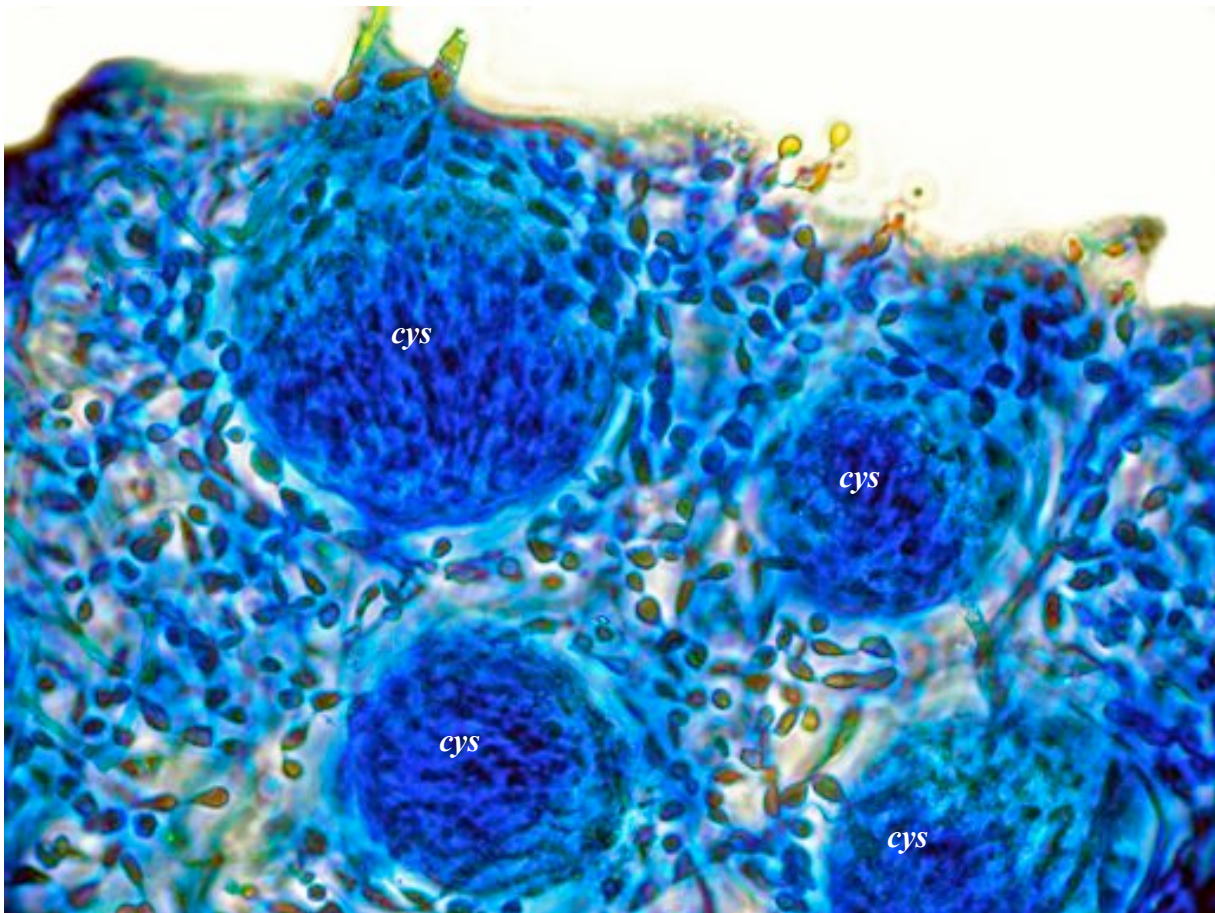
*Gloiophloea scinaoides*, but that species has thicker main branches without numerous irregular short side branches.

**Description in the Benthic Flora** Part IIIA, pages108, 109

**Details of Anatomy**



- 1, 2. Two magnifications of squashes of *Gloiophloea rosea* (A18613 slide 10605) stained blue to show
- the *narrow* core (medulla, *med*) of threads (filaments)
  - *wider* outer layer (cortex, *co*) of chains of ovoid cells facing outwards



Two magnifications of a cross section of a main branch of *Gloiophloea rosea* A18613 slide 10605, showing:

- cystocarps (*cys*) embedded in the outer (cortex) layer
- a weak wrapping (involucre, *inv*) of threads around the cystocarps