

SOUTHERN AUSTRALIAN SPECIES OF *GRIFFITHSIA* AT A GLANCE

(magnified cell detail may be in blue or colourised red; the coin scale is 24mm or almost 1" wide)

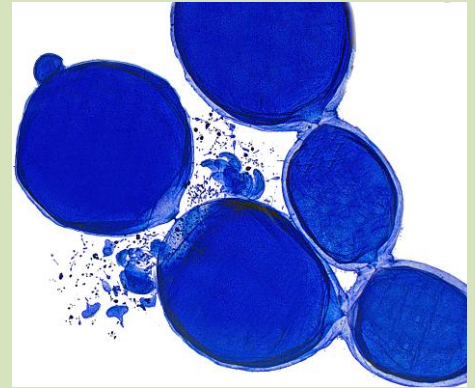
I. Species with bead-like chains of cells



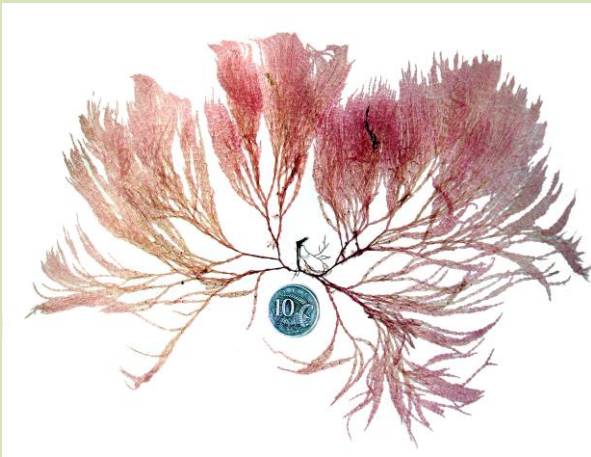
In situ image: D Muirhead



Griffithsia monilis



sporangial structures
(extruded slightly)



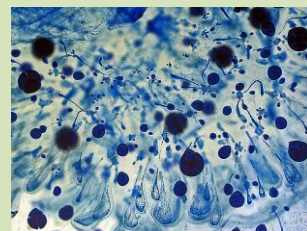
sporangial structures
(extruded slightly)



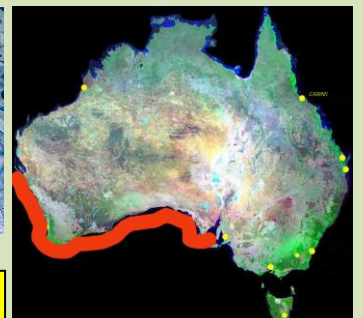
Griffithsia crassiuscula



sporangial structures

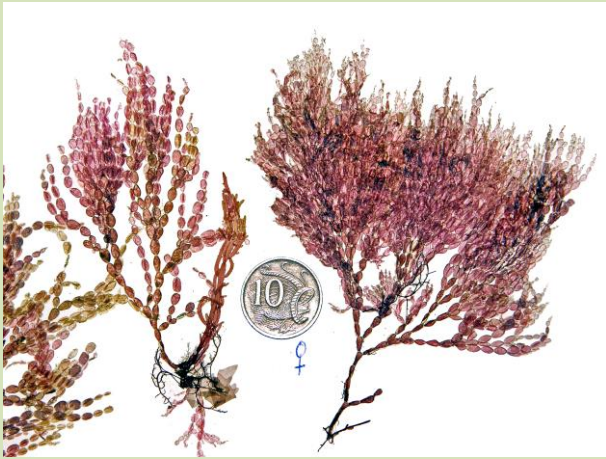


Griffithsia ovalis



species with bead-like chains of cells continued next page

species with bead-like chains of cells, continued



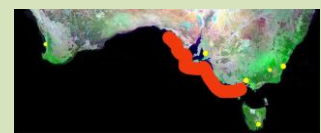
Griffithsia grandis



rare species



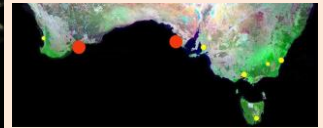
Griffithsia pilalyea



Griffithsia pulvinata

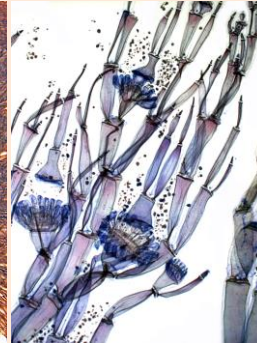
SOUTHERN AUSTRALIAN SPECIES OF *GRIFFITHSIA* AT A GLANCE (continued)

II. Species with cylindrical chains of cells



Griffithsia balara

rare species



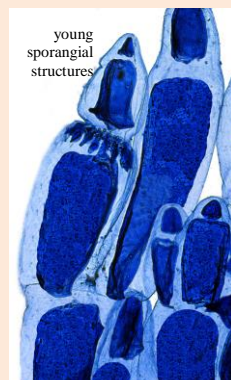
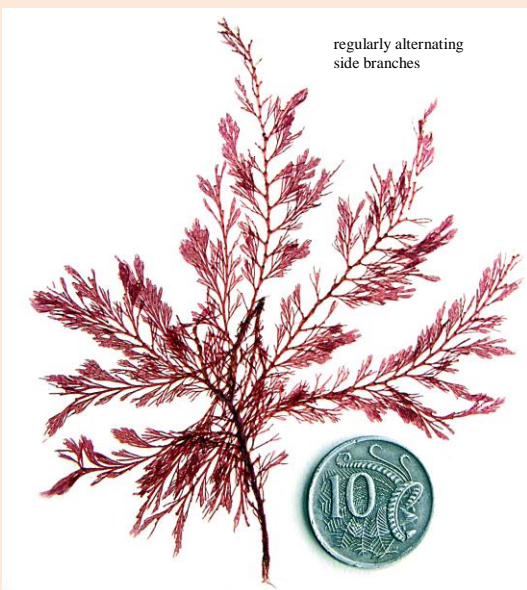
Griffithsia gunniana



pairs of swollen cells associated with spores or male structures



Griffithsia teges



Griffithsia elegans