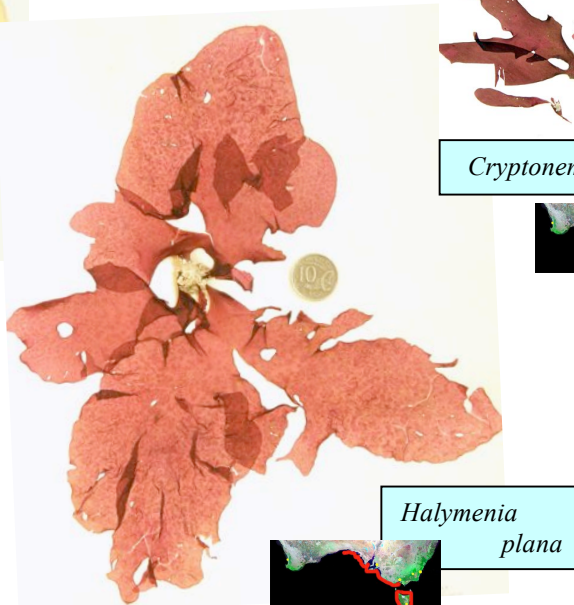
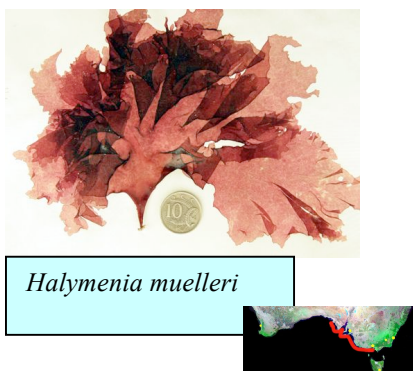
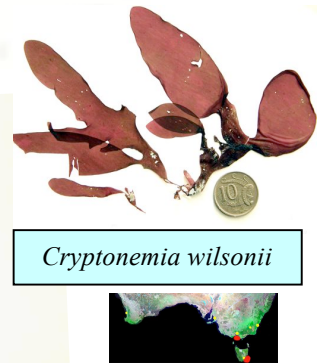
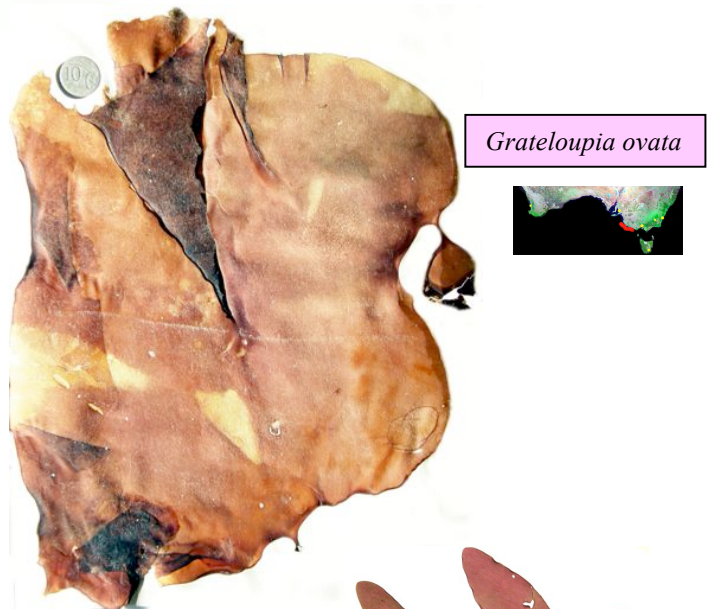
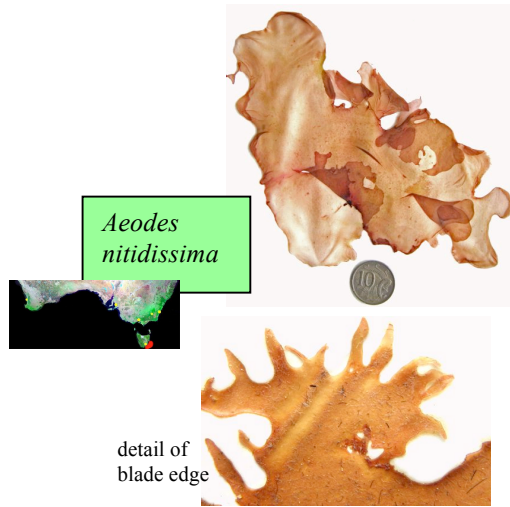
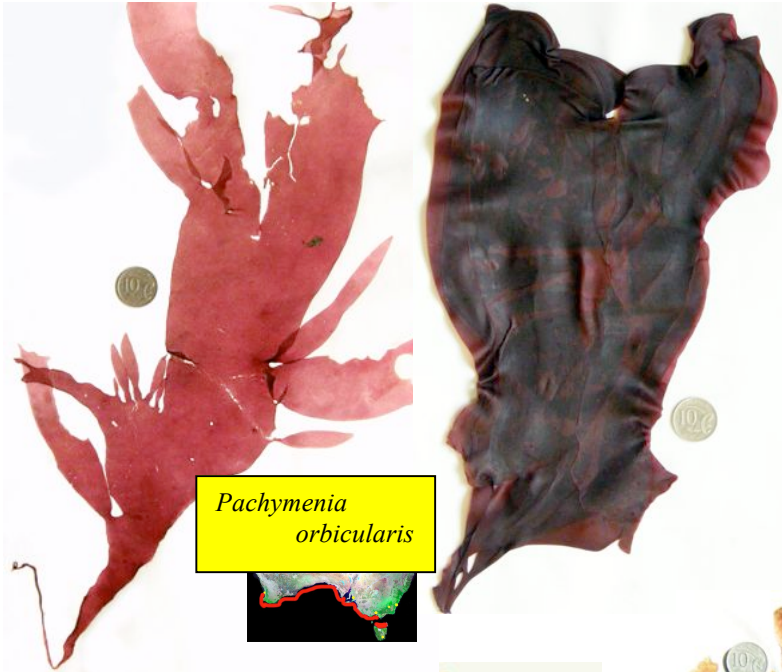


Southern Australian species of *Halymeniaceae* at a glance

(the coin scale is 24mm or almost 1" wide)

I. Broad, flat-bladed, foliose



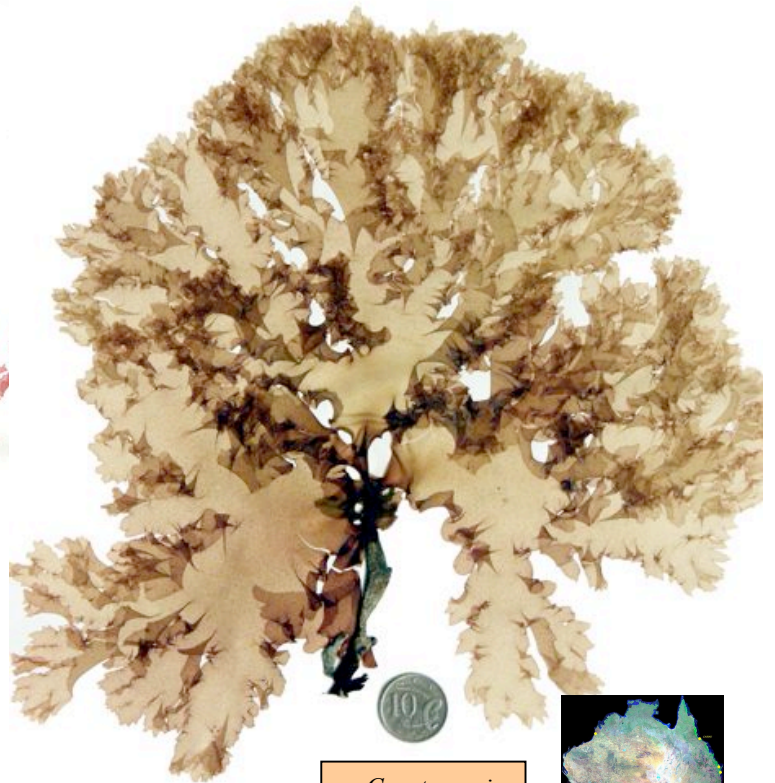
II. Flat-bladed, foliose, with fine terminal branches



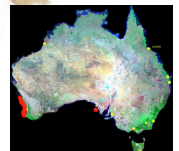
Cryptonemia undulata



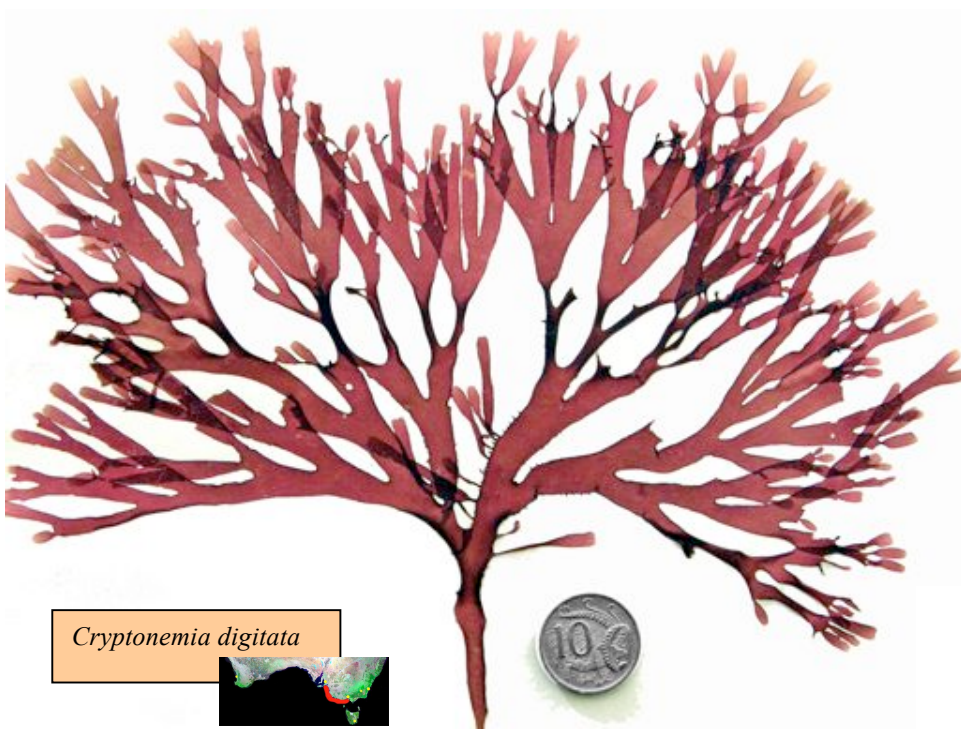
Halymenia floresia ssp harveyana



Cryptonemia kallymenioides



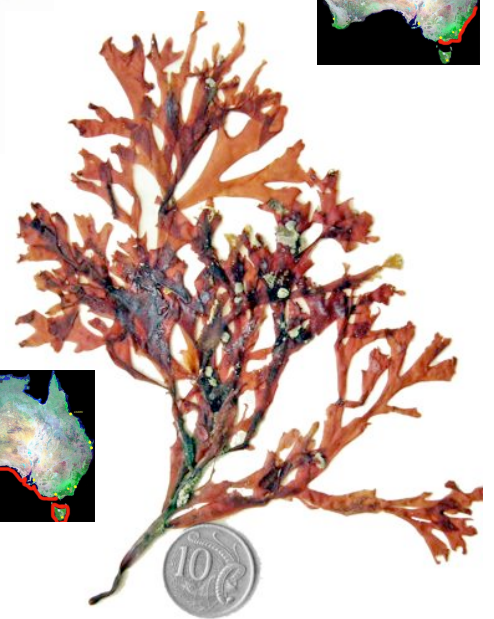
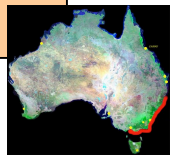
III. Flat-bladed, with forked branching



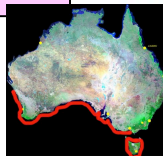
Cryptonemia digitata



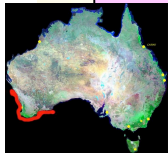
Cryptonemia nitophylloides



Carpopeltis phyllophora



Carpopeltis elata



partly covered in sponge

A small, brownish, flat-bladed alga with a branched structure, partially covered in a light-colored sponge. A 10c coin is placed to the right for scale.

Carpopeltis spongeaplexus

A map of Australia with a red outline indicating the distribution range of *Carpopeltis spongeaplexus*, primarily along the southern and western coasts.

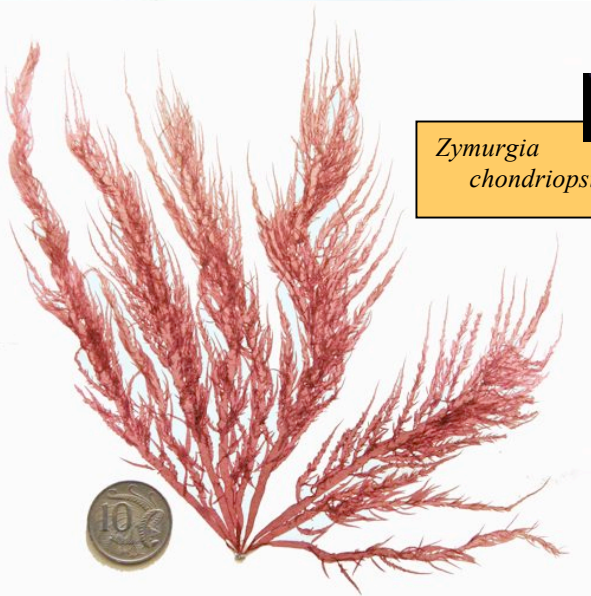
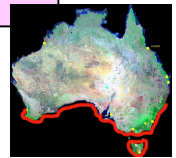
IV. Flat-branched, pinnate



Gelinaria ulvoidea



Grateloupia subpectinata
(as *Grateloupia filicina* var. *luxurians* in the Flora)



Zymurgia chondriopsidea



Polyopes tasmanicus
(as *Grateloupia tasmanica* in the Flora)



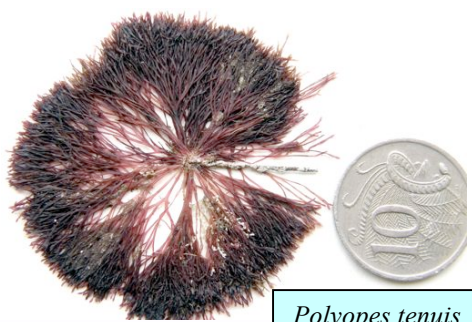
V. Compressed or cylindrical or narrow, with irregular or forked branches



Grateloupia intestinalis



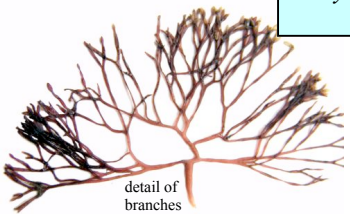
Polyopes tasmanicus
(as *Grateloupia tasmanica* in the Flora)



Polyopes tenuis



detail of branches



detail of branches



detail of branches

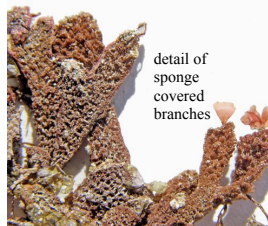
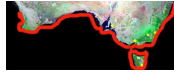


Polyopes constrictus

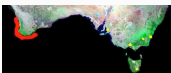


VI. totally or partly sponge-covered

*Thamnoclonium
dichotomum*



detail of
sponge
covered
branches



*Codiophyllum
flabelliforme*

partly covered in sponge



*Carpopeltis
spongeaplexus*

