

Techniques needed and shape



Classification

Phylum: Rhodophyta; Family: Delesseriaceae; Tribe: Nitophylloideae;
Group: Nitophyllum

***Descriptive name**

thorny-edged red blades

Features



plants red to red-brown, fading to a rose colour, 50-130mm tall, of *thin*, forked or flat-branched blades, 6-12mm wide *fringed* with numerous “thorns” (minute branches) central coast of W Australia to Victoria

Occurrences

Usual Habitat

on rock, occasionally on other algae, probably a deep water species (17-70m deep)

Similar Species

Halicnide simulans with branched thorns, but that species has a prominent mid-rib

Description in the Benthic Flora

Part IIID, pages 126-128

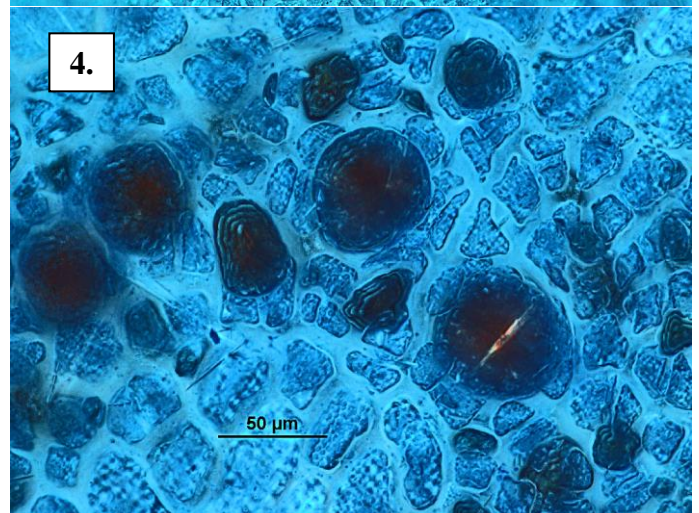
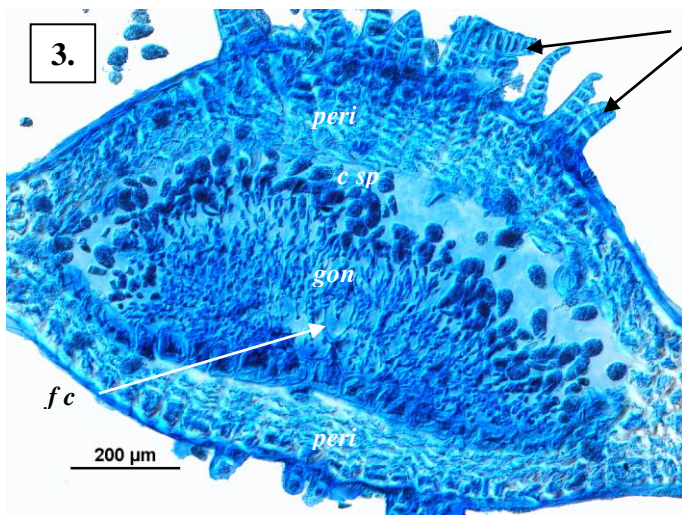
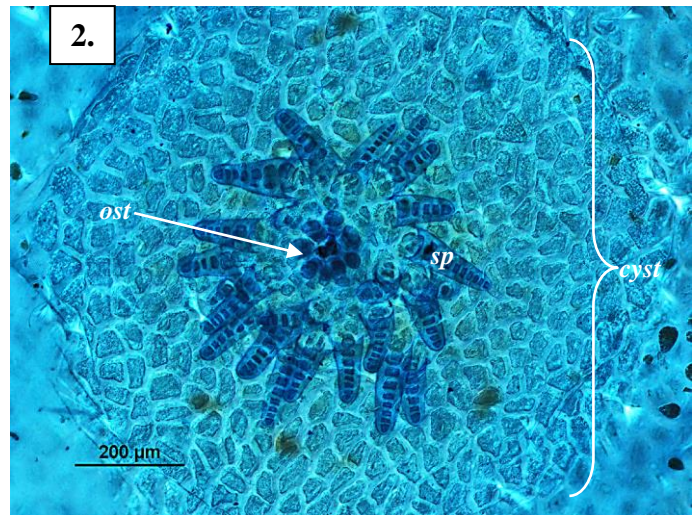
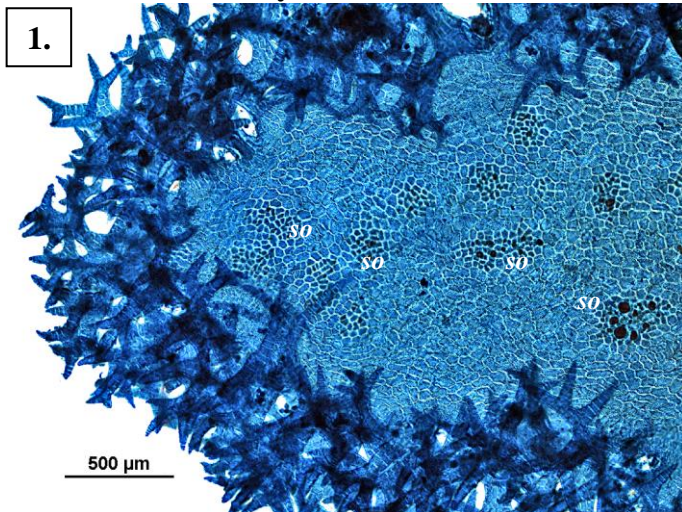
Special Requirements

view microscopically to find:



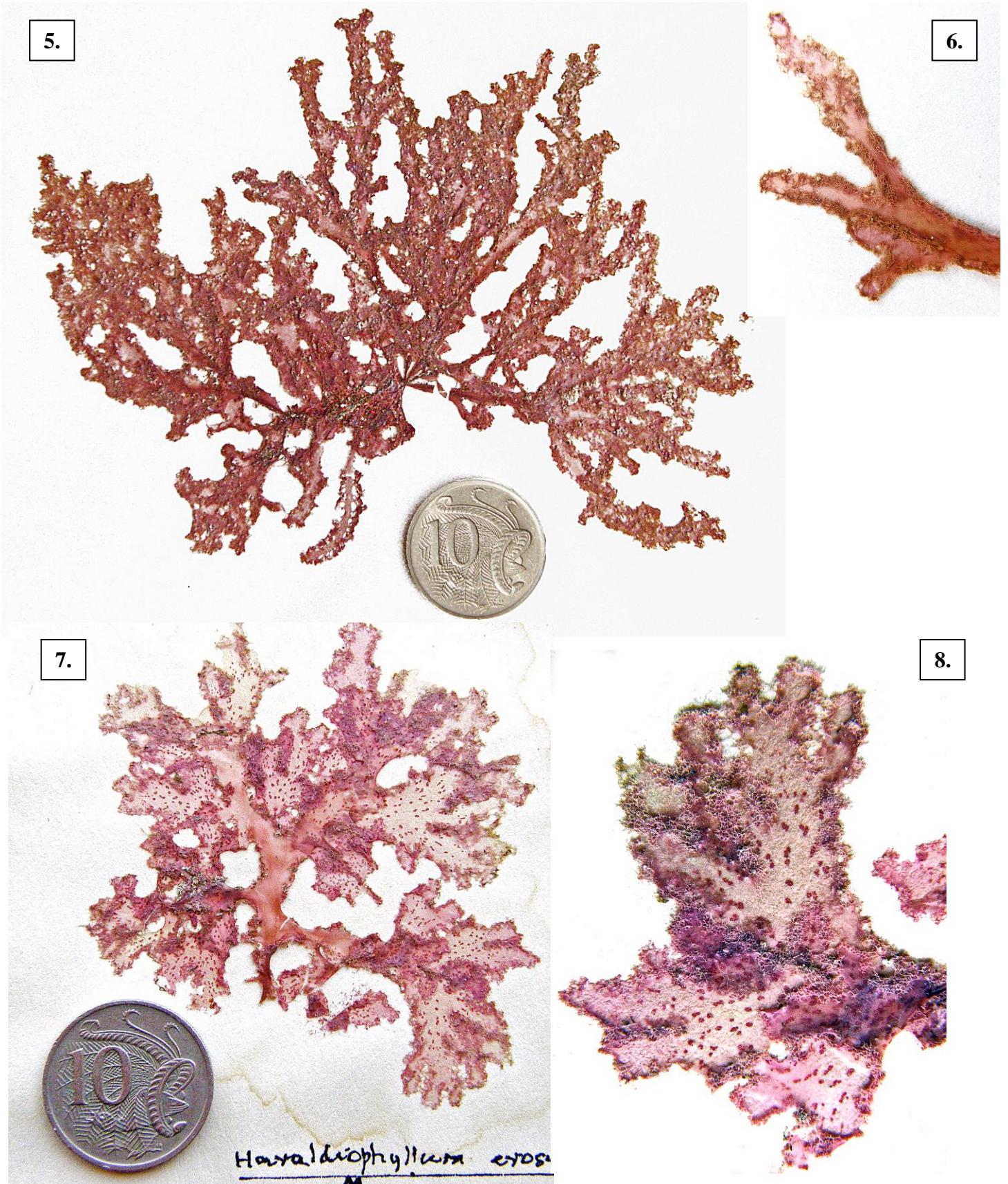
- blades *1-cell thick*, edges fringed with rigid, thorny branches; random pattern of cells, veins *absent*
- in female plants: scattered swollen female structures (cystocarps) with an opening ringed by tiny, spiny threads
- in sporangial plants, scattered patches (sori) of tetrasporangia divided tetrahedrally

Details of Anatomy



Haraldiophyllum erosum stained blue and viewed microscopically

1. surface view of a blade tip: fringe of spiny, branched threads, patches (sori, *so*) of developing tetrasporangia (slide 20558)
2. surface view of a swollen female structure (cystocarp, *cyst*): opening (ostiole, *ost*) ringed by spines (*sp*) (slide 20558)
3. cross section of a cystocarp: fusion cell (*fc*), carposporangia (*c sp*) at the tips of much branched tissue (gonimoblast, *gon*), wall of cells (pericarp, *peri*), surface, spiny threads (arrowed) (slide 17548)
4. surface view of a cluster of tetrasporangia (slide 20558)



Pairs of different magnifications of *Haraldiophyllum erosum* (Harvey) Millar & Huisman showing the dense fringe of microscopic spines, lack of veins and scattered tetrasporangial patches

5, 6. a drift plant from Seal Bay, Kangaroo I., S Australia (A32951)

7, 8. a drift tetrasporangial plant from Queenscliff, Victoria (A25787)