

Techniques needed and shape



Classification

Division: Rhodophyta; Family: Delesseriaceae; Tribe: Nitophylloideae
Group: Cryptopleura

*Descriptive name

Flat-branched Cellophane Plant

Features

plants 50-100mm tall, dark red, mostly flat-branched, with of 1-3mm wide, midline vein **absent** but vague, wandering, microscopic veins present; blade edges have **no** serrations

Variations

variable: some plants with broad, lobed tips, others with narrow forked ones. Curled or hooked tips occur in specimens from Little Dip CP, similar to those of *Acrosorium ciliolatum*

Special requirements



1. view a blade edge microscopically to see the line of dividing cells producing blades 1-cell thick (except in older parts that are 3 cells thick)
2. view the vague microscopic veins, mainly **1 cell** wide
3. find the scattered patches of tetrasporangia near the blade tips



Occurrences

Usual Habitat

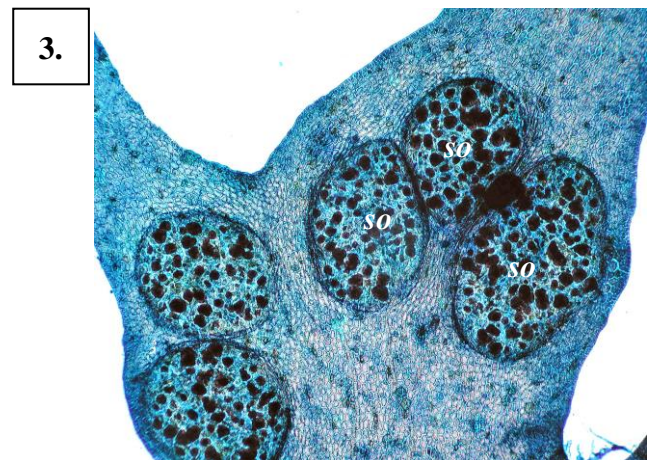
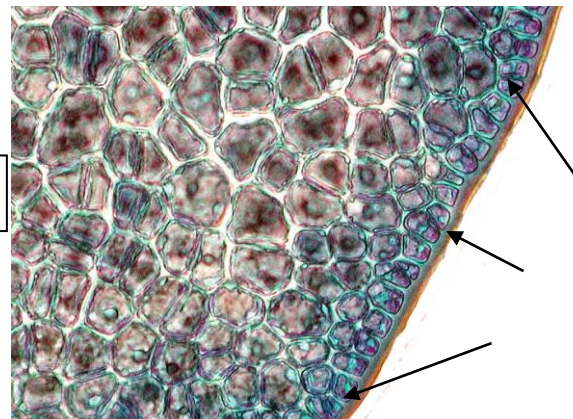
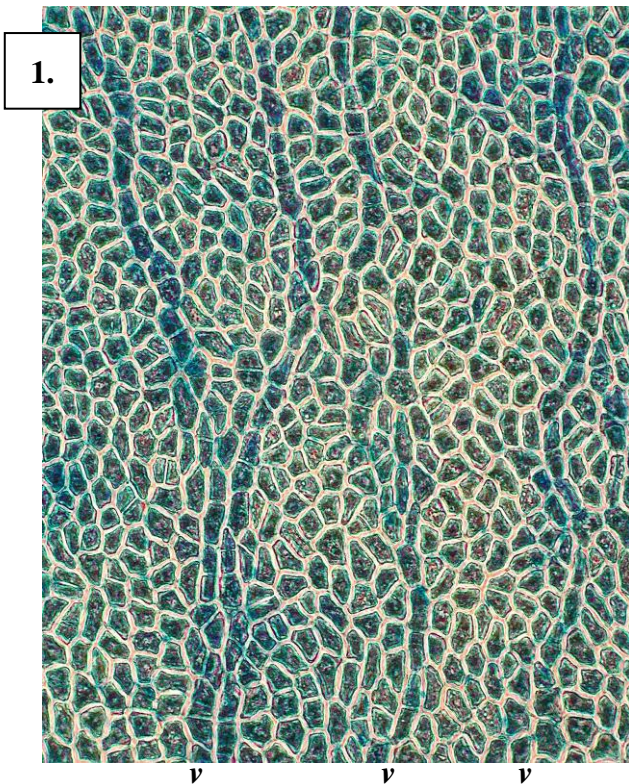
from West Coast S Australia to Victoria, and Indian Ocean islands on rock, often in deep water (30-50m)

Similar Species

Hymenena affinis has broader branches pinnately lobed (in opposite pairs); *H. curdieana* has a distinct basal stalk and microscopic veins are 2-4 cells wide

Description in the Benthic Flora Part IIID , page 139-141

Details of Anatomy

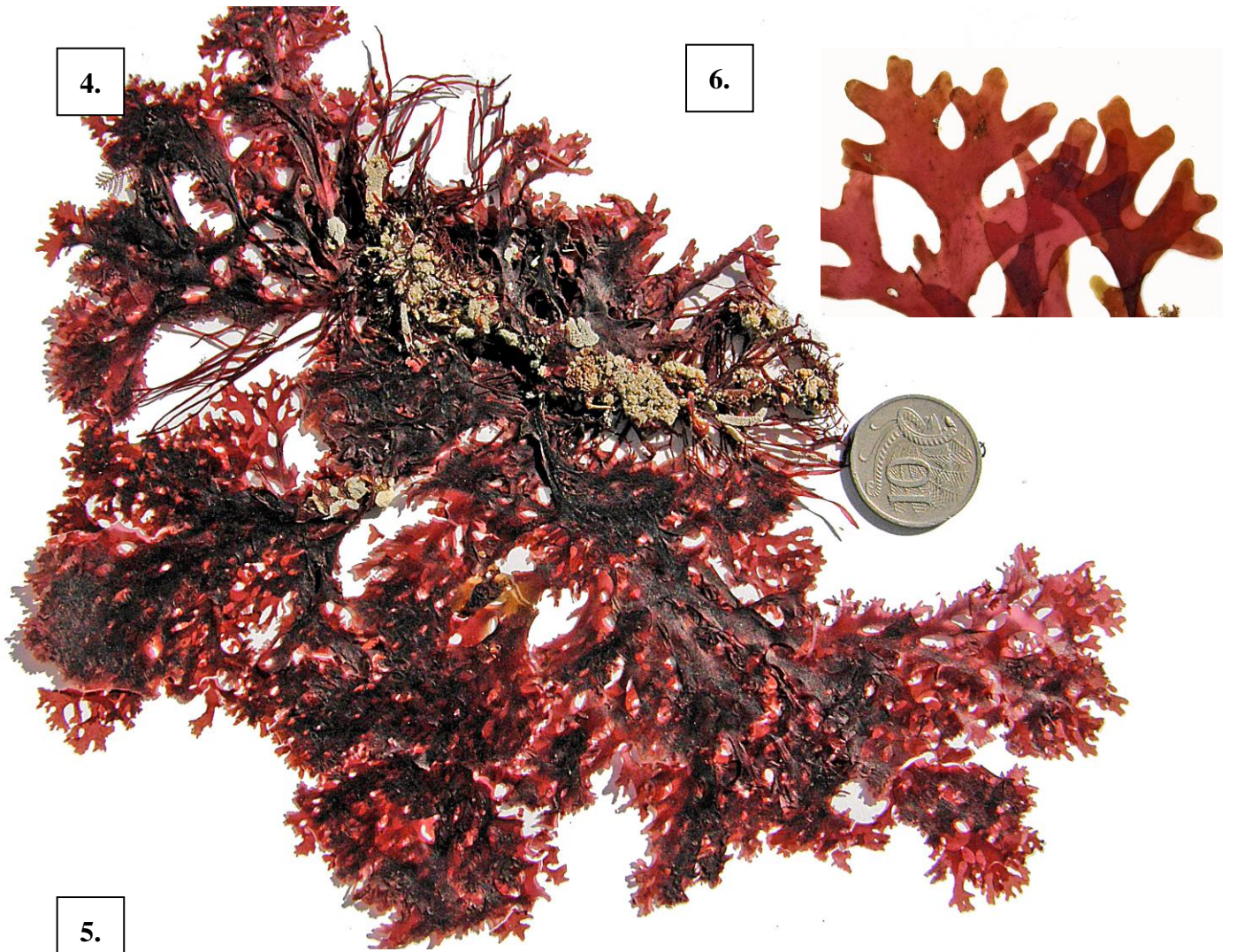


Hymenena multipartita stained blue and viewed microscopically

1. surface view: vague, branched, microscopic veins (v) mostly one cell wide (slide 18706)
2. blade margin: row of cells (arrowed) dividing to form the many-sided cells of the blade (slide 18706)
3. near blade tips: absence of a midline vein; 1-3 patches (sori, so) of tetrasporangia (slide 18707)

* Descriptive names are inventions to aid identification, and are not commonly used

“Algae revealed, R N Baldock, State Herbarium S Australia, March 2003; additions August 2007; edited April 2014

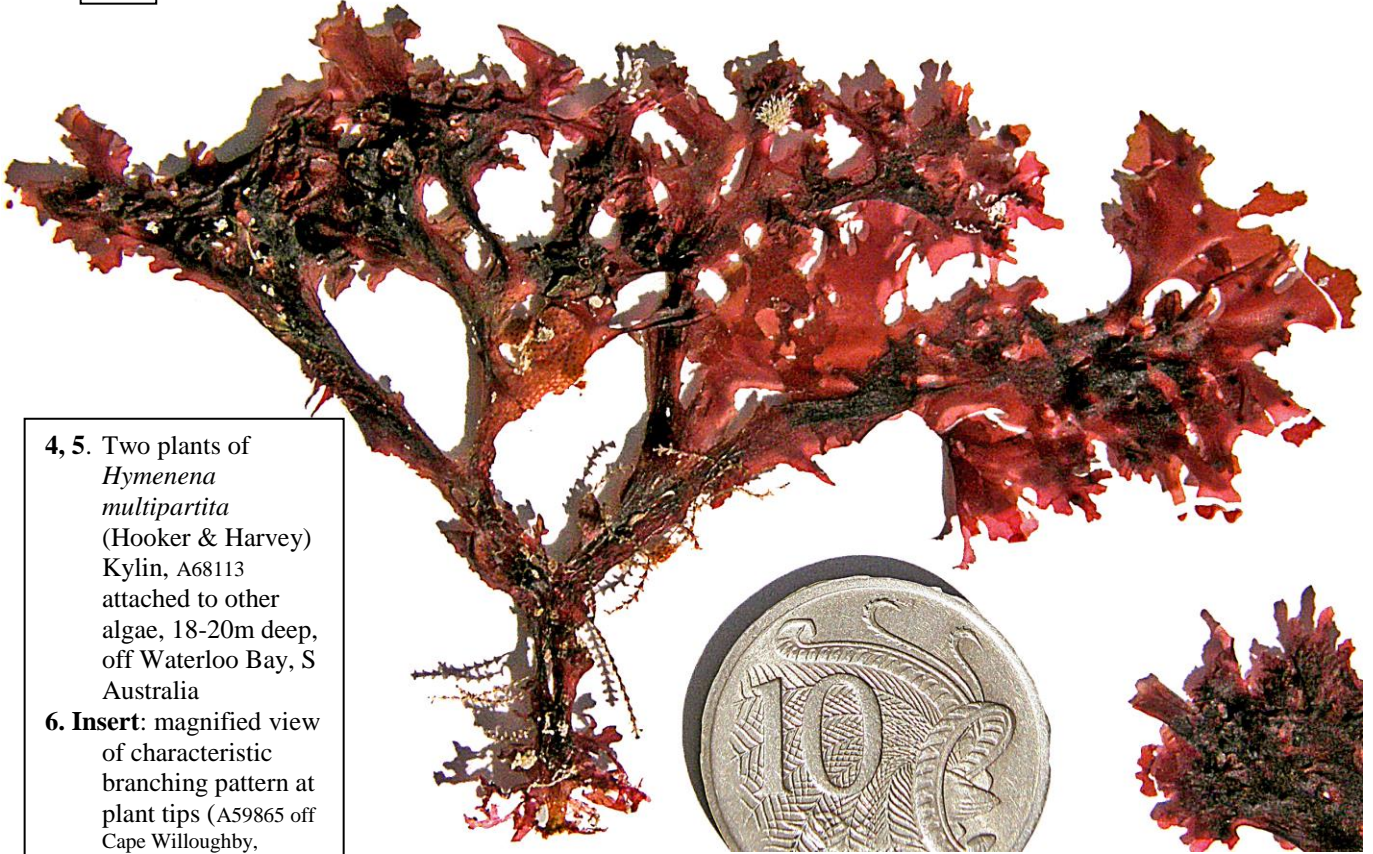


4.

6.



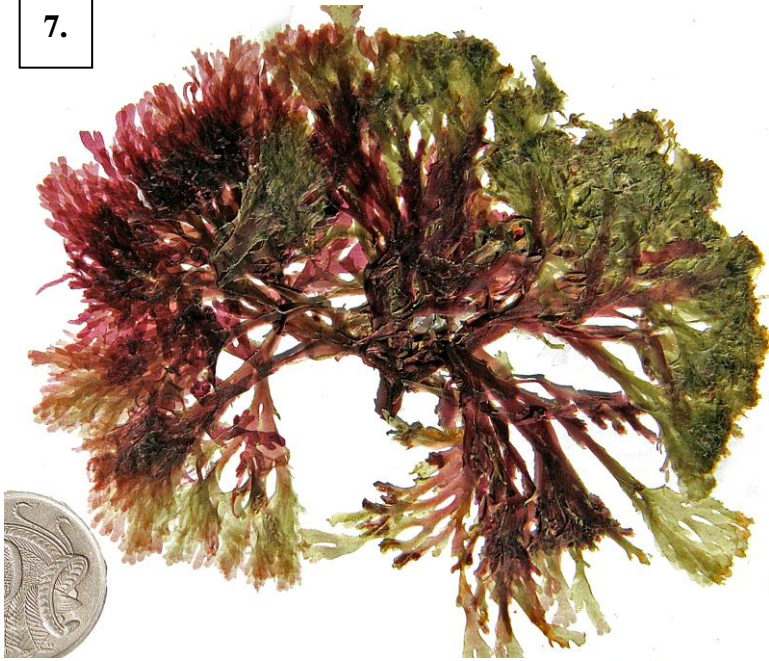
5.



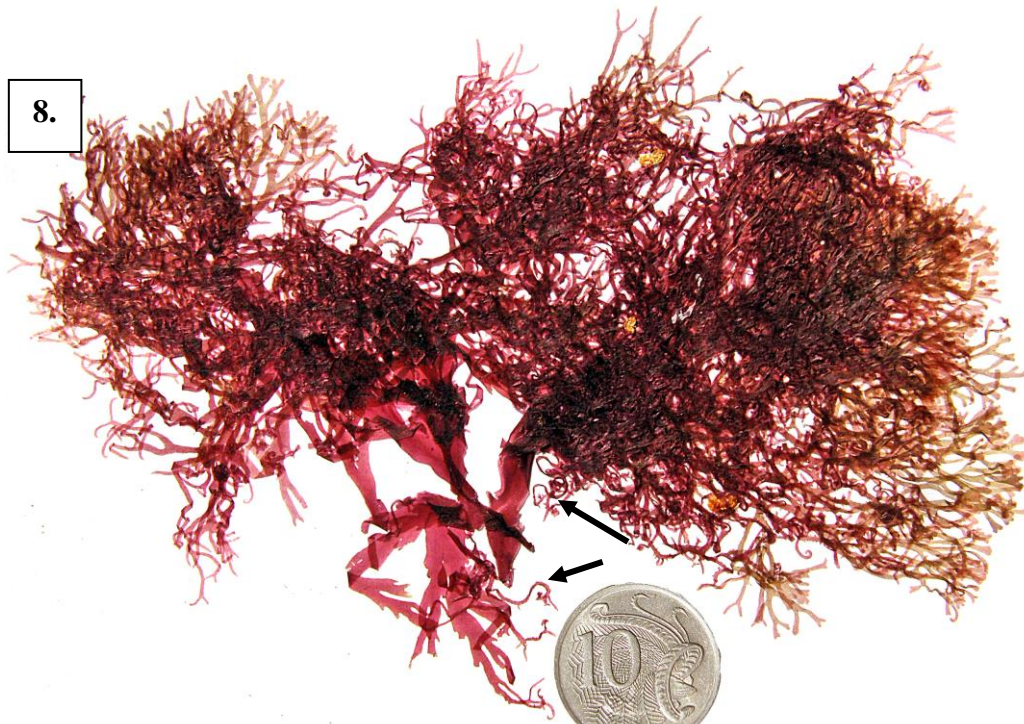
4, 5. Two plants of *Hymenena multipartita* (Hooker & Harvey) Kylin, A68113 attached to other algae, 18-20m deep, off Waterloo Bay, S Australia
 6. **Insert:** magnified view of characteristic branching pattern at plant tips (A59865 off Cape Willoughby, Kangaroo I., 38m deep)

* Descriptive names are inventions to aid identification, and are not commonly used
 "Algae revealed, R N Baldock, State Herbarium S Australia, March 2003; additions August 2007; edited April 2014

7.



8.



9.



7, 8. specimens of *Hymenena multipartita* (Hooker & Harvey) Kylin A68377 from Back Beach , Little Dip Conservation Park, S Australia

7. with relatively broad, irregularly lobed tips

8. with narrow, curled tips (arrowed) peculiar to specimens from this locality

9. *Hymenena multipartita* drift plant from Bashams Beach, Port Elliot, S Australia, showing narrow forked tips (A68396)