

Techniques needed and plant shape



Classification

Phylum: Phaeophyta; Order: Ectocarpales; Family: Ectocarpaceae

***Descriptive name**

surface tufts

Features



the plant body consists of a pad of equal-sided cells and erect threads growing on other brown algae

Special requirements



view microscopically the basal *pads* and *tufts* on the surface of other algae made up of threads with brown plastids, tapering into false hairs and elongate, stalkless (sessile) spore sacs with either many compartments (*plurilocular* sporangia) or a single compartment (*unilocular* sporangia).

Occurrences

only known from bays in Victoria

Usual Habitat

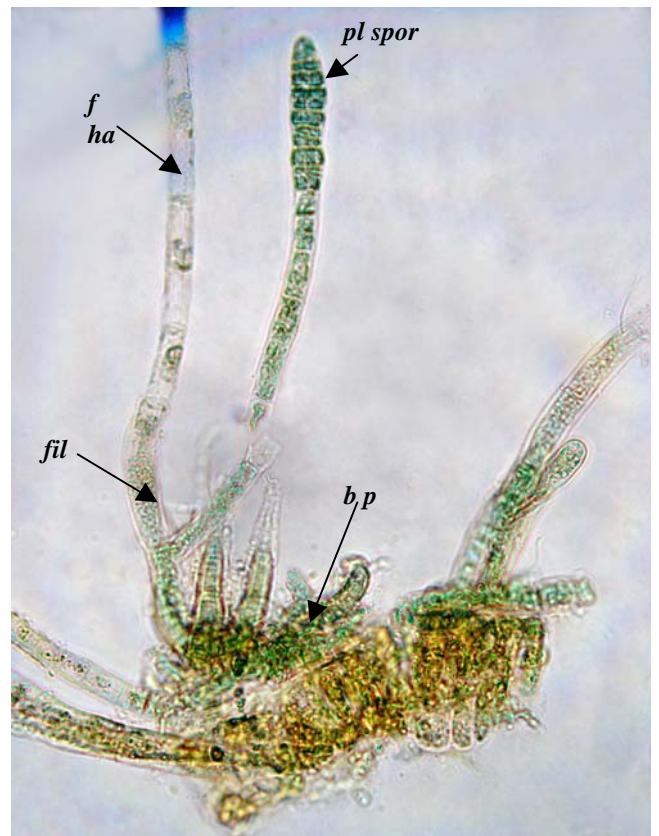
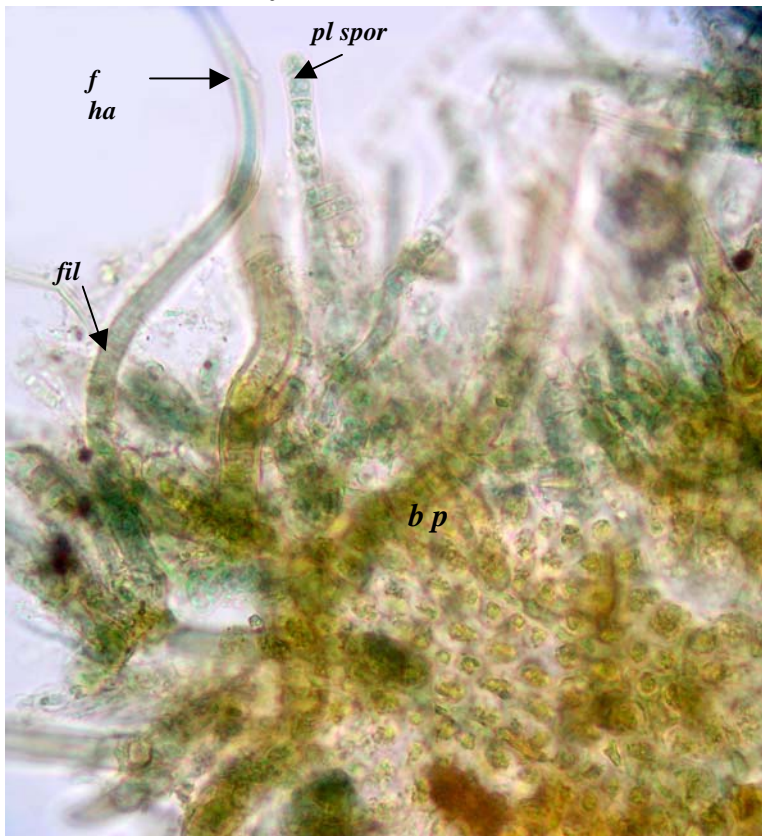
only on large brown algae and possibly also on rock

Similar Species

other epiphytic brown, filamentous algae

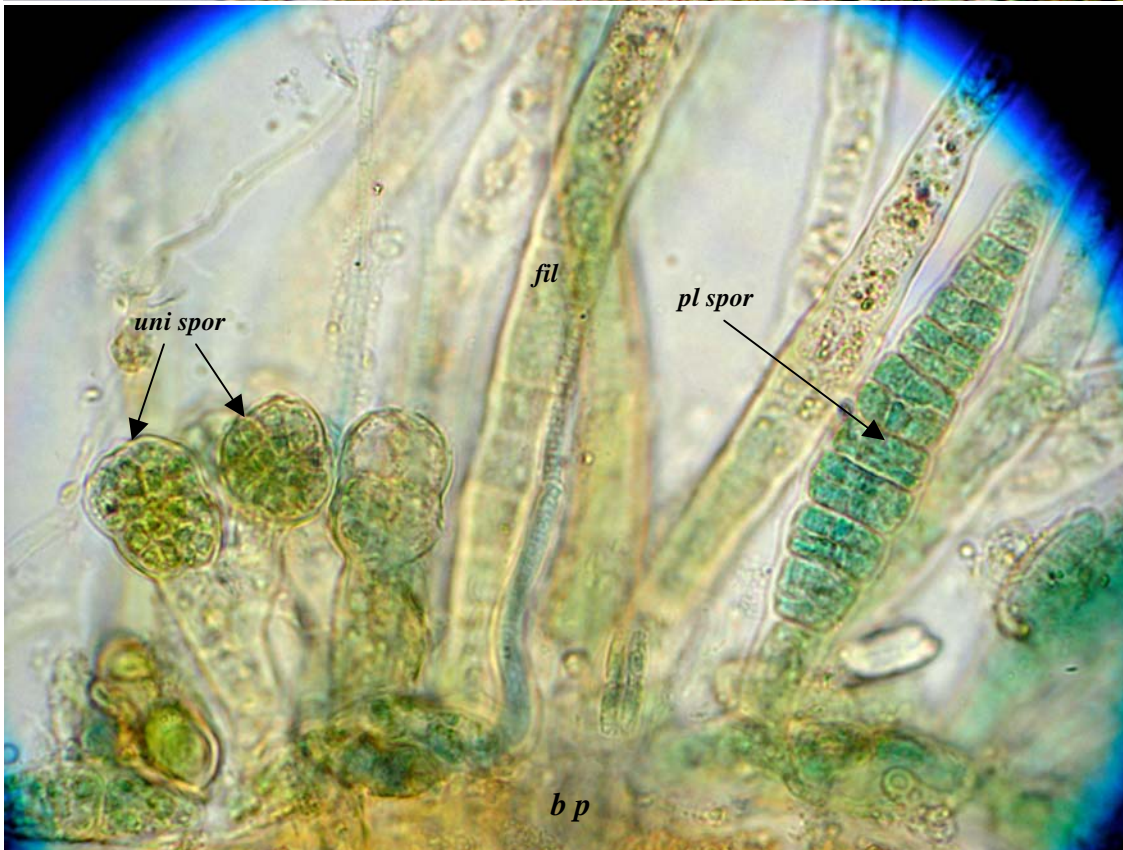
Description in the Benthic Flora Part II, page 56. Originally in Clayton, M (1974). Studies on the development, life history and taxonomy of the Ectocarpales (Phaeophyta) in southern Australia. *Aust. J. Bot.* **29**, 497-505

Details of Anatomy



Magnified images of dissected pieces, partially stained blue, of *Kuetzingiella* sp (A49216, slide 4480) removed from the host plant, *Cystophora torulosa*, showing branched photosynthetic (assimilatory) filaments, *fil* ending in false hairs (*f ha*), closely adhering filaments of the basal pad (*b p*), stalkless sporangia with one or 2-rows of many compartments (plurilocular sporangia, (*pl spor*) or a single compartment (unilocular sporangia, *uni spor*).

* Descriptive names are inventions to aid identification, and are not commonly used
"Algae Revealed" R N Baldock, S Australian State Herbarium, August 2005



Kuetzingiella sp
 (A49216, slide 4480)
 Highly magnified images of dissected pieces of plant partly stained with aniline blue, removed from the host, *Cystophora torulosa*, showing branched photosynthetic (assimilatory) filaments, *fil*), closely adhering filaments of the basal pad (*bp*), stalkless sporangia with one or 2-rows of many compartments (plurilocular sporangia, *pl spor*) or a single compartment (unilocular sporangia, *uni spor*).

* Descriptive names are inventions to aid identification, and are not commonly used
 "Algae Revealed" R N Baldock, S Australian State Herbarium, August 2005