

**Techniques needed and shape**



**Classification**

Division: Rhodophyta; Family: Delesseriaceae; Tribe: Nitophylloideae

**\*Descriptive name**

Mesh-tips (referring to the delicate net pattern of branching at blade tips)

**Features**

1. plants consist of *flat* blades, thin, solid, light red, branching at their bases, ending in a flat, dark red-brown terminal mesh of threads with narrow, toothed marginal bands
2. a cylindrical stalk may occur at the plant base

**Variations**

the toothed bands at top may be fragmented and the net below frayed; the basal stalk may be detached during collection. Second sets of meshes may occur in plants from Aldinga.

**Special requirements**

view the surface of the blades, microscopically

**Occurrences**

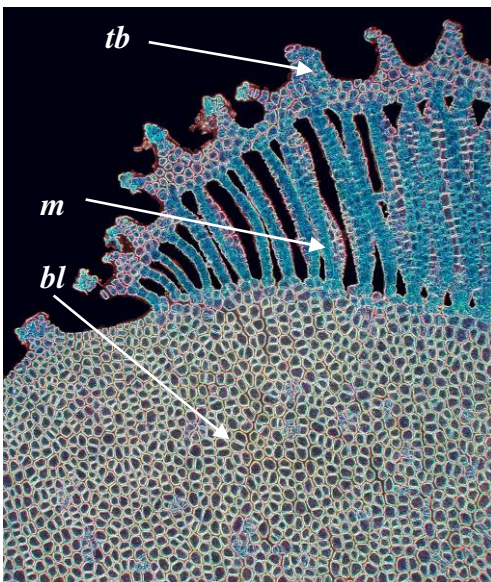
from tropical Australia & New Guinea to N Tasmania

**Usual Habitat**

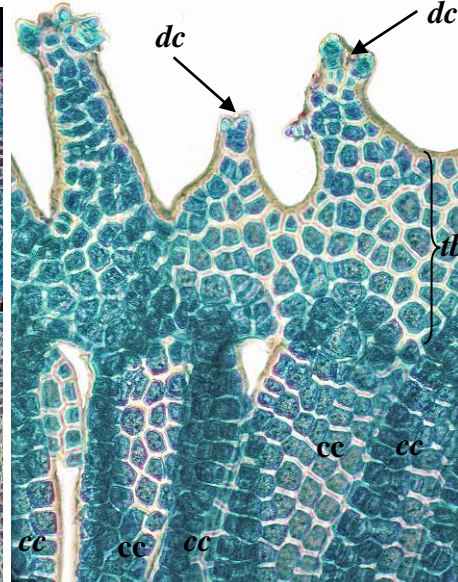
on rock, in relatively deep water or in shaded shallow habitats

**Description in the Benthic Flora** Part IIID, page 95-98

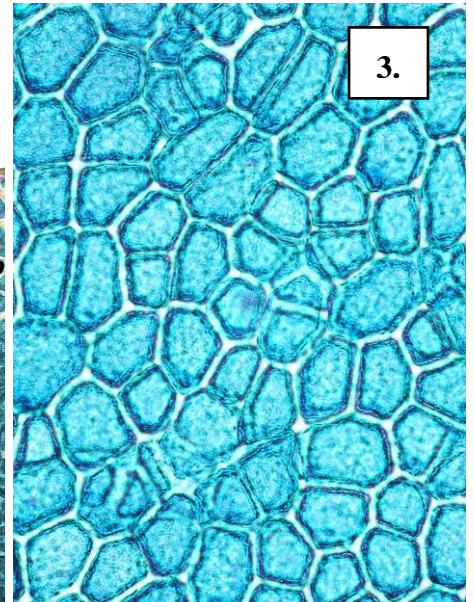
**Details of Anatomy**



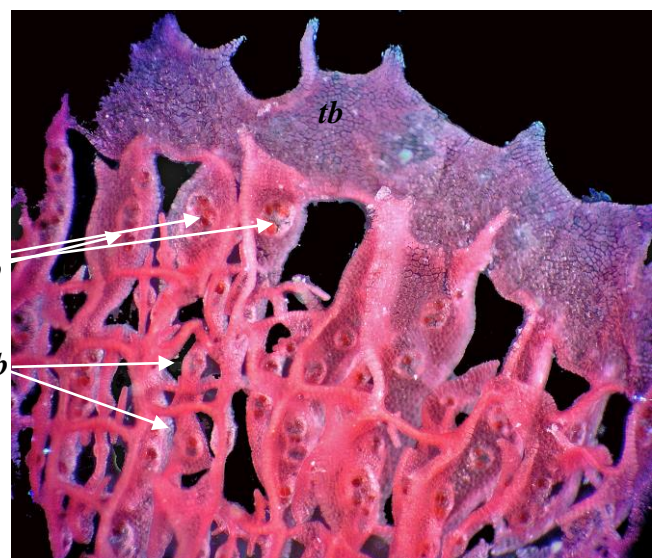
1.



2.



3.

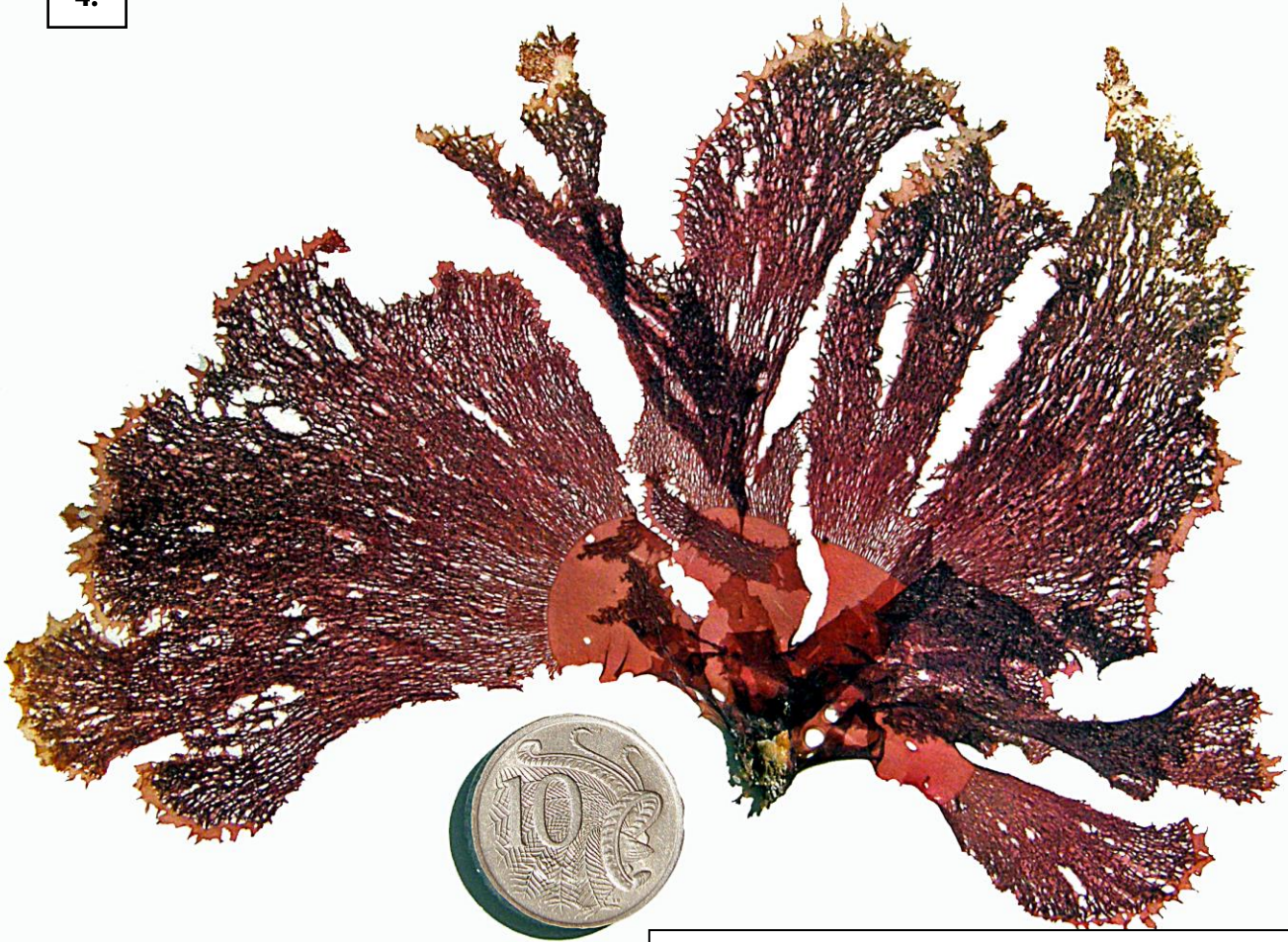


Blade of *Martensia australis* (slide 17251):

1. toothed band (*tb*) that generates columns of cells forming the characteristic mesh (*m*) and solid basal part of the blade (*bl*)
2. toothed band, (*tb*), dividing cells (*dc*), flat columns of mesh cells (*cc*)
3. surface view of cells of the solid basal part of the blade
4. sporangial patches (sori, *so*) on vertical bars; thin cross bars (*cb*) of the mesh

\* Descriptive names are inventions to aid identification, and are not commonly used  
 "Algae revealed", R N Baldock, State Herbarium S Australia, March 2003; additions August 2007, April 2014

4.



*Martensia australis* Harvey  
4. from Sheringa Bay, Eyre Peninsula, S. Australia (35143)  
5. from SE of S Australia

5.



\* Descriptive names are inventions to aid identification, and are not commonly used  
“Algae revealed”, R N Baldock, State Herbarium S Australia, March 2003; additions August 2007, April 2014