

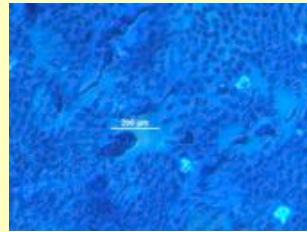
SOUTHERN AUSTRALIAN SPECIES OF THE FAMILY: PEYSSONNELIACEAE

(microscope views are in blue; the coin scale is 24mm or almost 1" wide)

I. Totally encrusting rock and shell



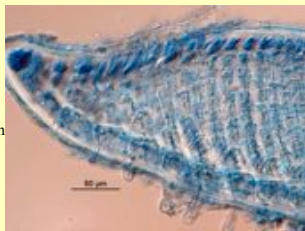
blade cells in surface view



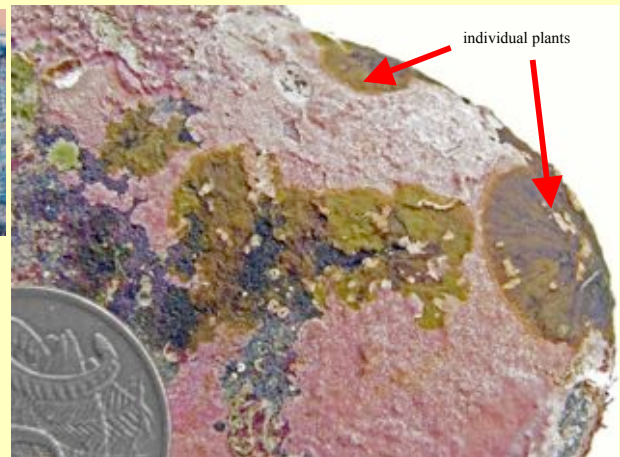
Peyssonnelia boudouresquei



radial cross section



Peyssonnelia splendens



individual plants

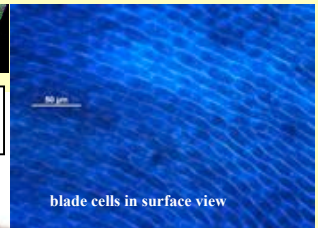
Peyssonnelia dubyi



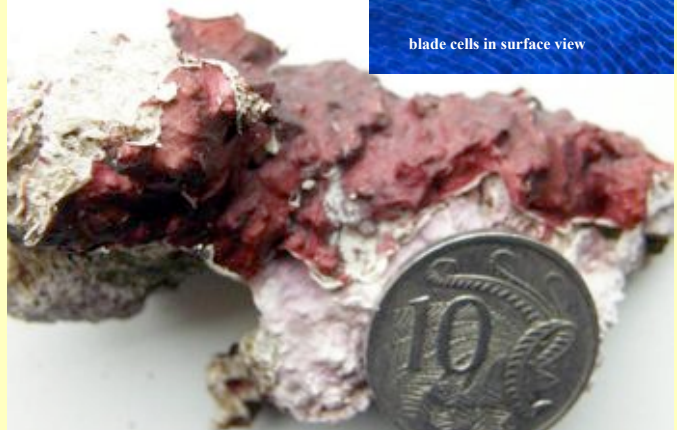
blade cells in surface view



Peyssonnelia inamoena



blade cells in surface view

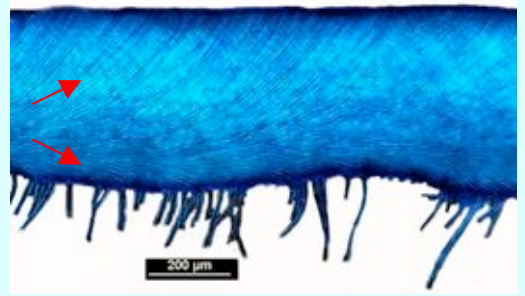


II. Attached to rock and flat, but not encrusting

IIa. Internal threads run upwards \blacktriangleright *and* \blacktriangleleft downwards



Sonderopelta coriacea

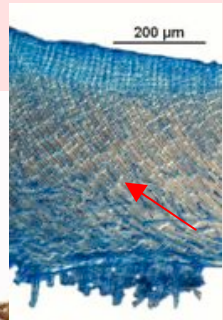


radial section of blade

IIb. Internal threads run only *upwards* \blacktriangleright



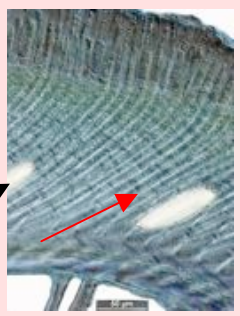
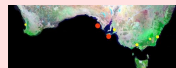
Peyssonnelia novae-hollandiae



radial section of blade

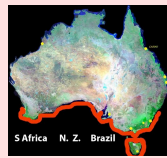


Peyssonnelia foliosa

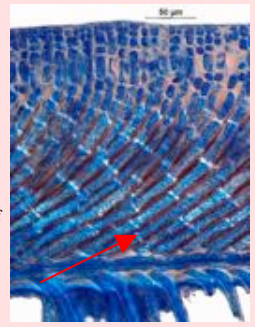


calcified deposit

radial section of blade



Peyssonnelia capensis



radial section of blade

