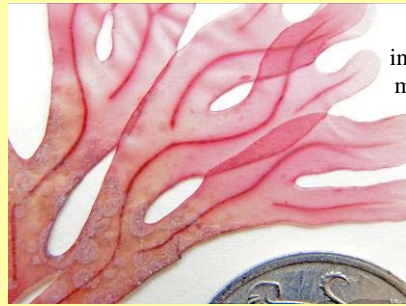


# SOUTHERN AUSTRALIAN SPECIES OF PHYLLOPHORACEAE AT A GLANCE

(microscope images are blue-stained; the coin scale is 24mm or almost 1" across)

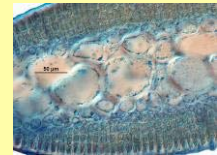
## I. BRANCHES BLADE-LIKE (broad and filmy)



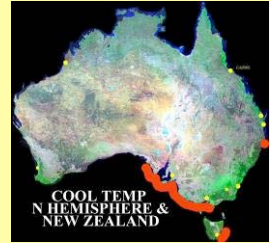
interrupted mid-veins

blades up to 15mm wide

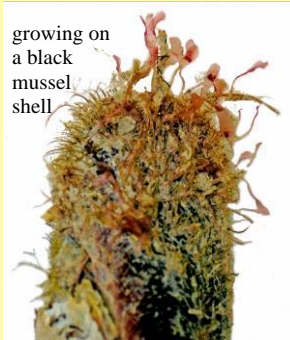
*Stenogramme interrupta*



cross section



COOL TEMP  
N HEMISPHERE &  
NEW ZEALAND



growing on a black mussel shell



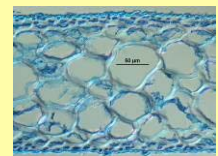
fertile bands



blades 2-5mm wide

**AN INTRODUCED OR ADVENTIVE SPECIES**

*Schottera nicaeensis*



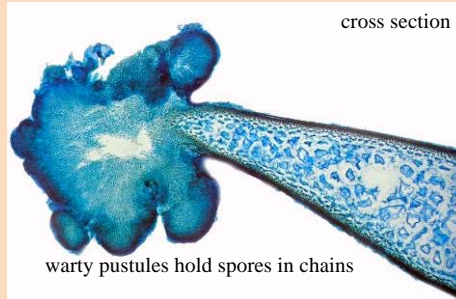
cross section



## II BRANCHES NARROWER, THICKER, GRISTLY



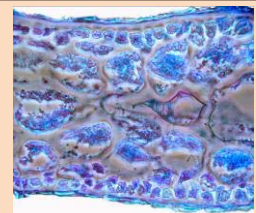
blades 2-4mm wide



cross section

warty pustules hold spores in chains

*Gymnogongrus griffithsiae*



cross section

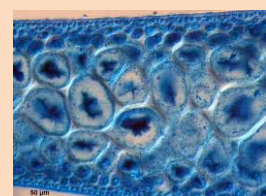


W EUROPE  
MEDITERRANEAN  
E ATLANTIC COAST

**AN INTRODUCED OR ADVENTIVE SPECIES**



*Gymnogongrus crenulatus*



cross section



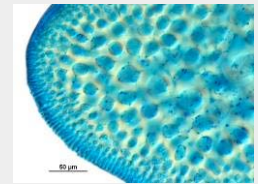
W EUROPE  
MEDITERRANEAN  
E N AMERICA

**AN INTRODUCED OR ADVENTIVE SPECIES**

III. BRANCHES NARROW (cylindrical or only partly flattened), FORKED, GRISTLY



branches about 1.0 mm wide



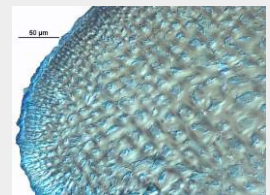
cross section



*Ahnfeltiopsis humilis*



branches about 0.5mm wide



cross section



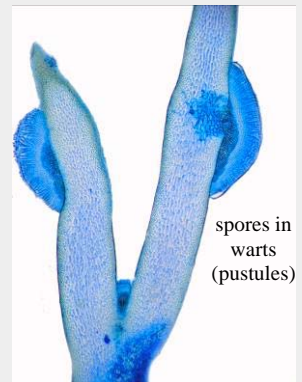
*Ahnfeltiopsis fastigiata*



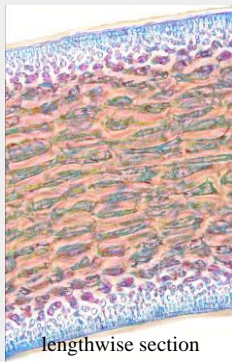
branches about 0.5mm wide



spores in warts (pustules)



spores in warts (pustules)



lengthwise section



W EUROPE  
MEDITERRANEAN  
E ATLANTIC COAST

**AN INTRODUCED OR ADVENTIVE SPECIES**

*Gymnogongrus griffithsiae*