

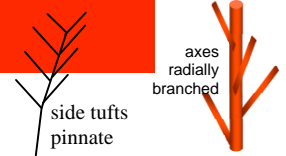
# *Pityophycos tasmanica*

(Sonder) Papenfuss

A SPECIES WITH FEW RECORDS

45.940.00

PLANT



## Techniques needed and plant shape



## Classification

### \*Descriptive name

### Features

Division: Rhodophyta; Family: Rhodomelaceae; Tribe: Polysiphonieae  
jagged threads

plant is dark red-brown, 100-400mm tall, of several main branches (axes), edged with tiny short side tufts giving it a jagged appearance

## Special requirements



view microscopically to find

- single apical cells, often topped by a colourless branched hair or trichoblast, forming a thread rapidly flanked with 4 pericentral cells, then clothed (corticated) with smaller thick walled cells
- side tufts arranged *radially* around axes, of *paired branches*: the upper *flat-branched* with 3-5 alternating, short, pointed branches (pinnules); the lower unbranched or *sparingly* branched
- ball-shaped cystocarps, the products of fertilisation, near the ends of short pinnate branches
- tetrasporangia in side (determinate) branches (not figured)

## Occurrences

### Usual Habitat

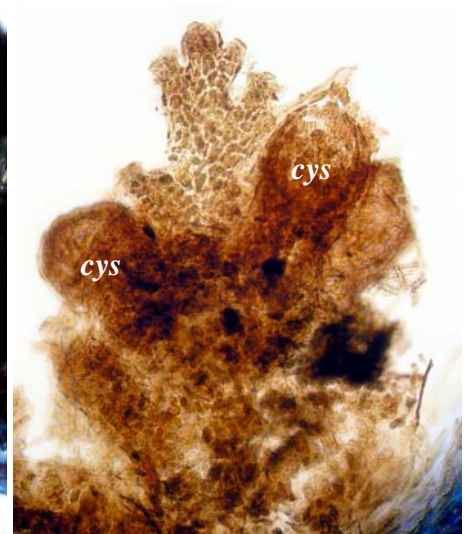
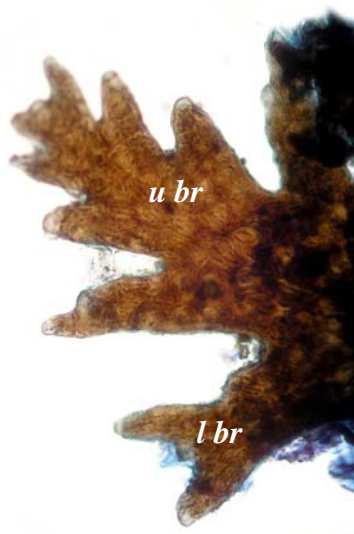
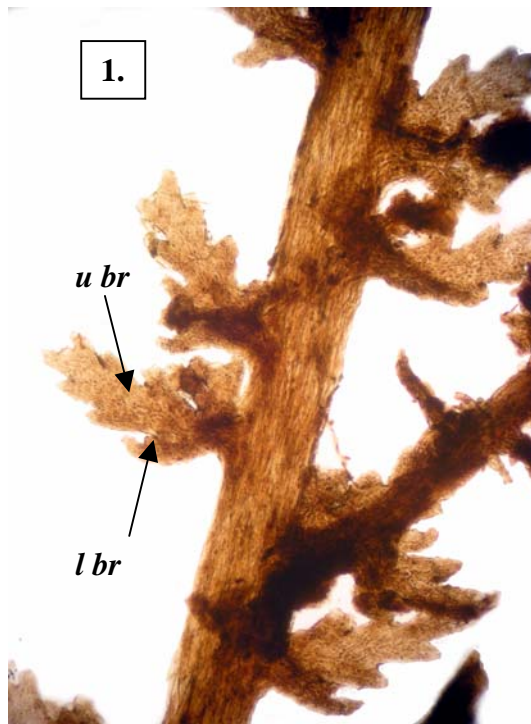
### Similar Species

Georgetown and Low Head, Tasmania and Port Phillip, Victoria  
not recorded

*Chiracanthia* but that genus has only pinnate side branches, often ending in a long thread

Description in the Benthic Flora Part IIID, pages 231-233

## Details of Anatomy



2.

3.

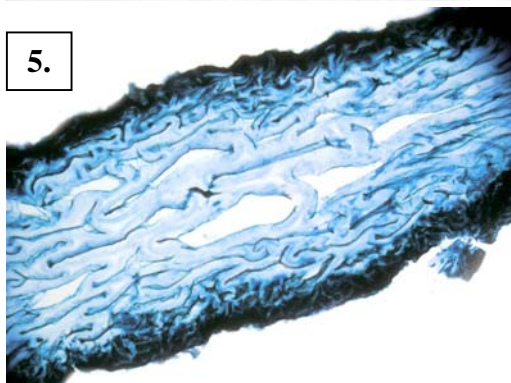
### *Pityophycos tasmanica* viewed microscopically

1. main branch (axis, *ax*) and side tufts of branch pairs the upper, flat-branched (*u br*) the lower (*l br*) unbranched or partly branched (A68559 slide 19238)
2. detached side tuft with upper branched and lower partly branched parts (A49949 slide 18906)
3. young products of fertilisation-cystocarps (*cys*) (A68573 slide 19252)

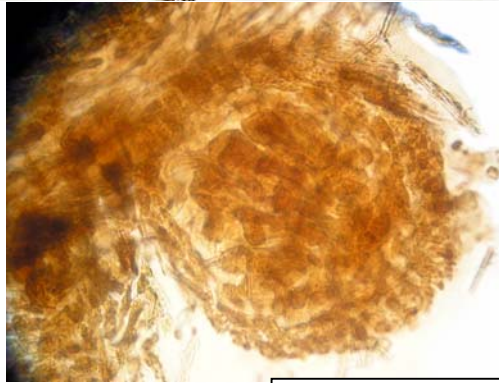
4. a drift plant of *Pityophycos tasmanica* (Sonder) Papenfuss, A71539 on stone from San Remo, Victoria



5.



6.



7.



*Pityophycos tasmanica* viewed microscopically

- 5 cross section of a side branch showing thick-walled cells (the central filament and 4 flanking pericentral cells are obscured) (A71539 slide 18910)
- 6 mature cystocarp with a wall one cell thick (A68573 slide 19252)
- 7 specimen from San Remo, Victoria (A71539) showing the jagged appearance of a magnified portion