



Techniques needed and plant shape

Classification

Phylum: Chlorophyta; Order: Caulerpales;
Family: Udoteaceae

*Descriptive name

false green threads

Features



plants green to dark green, 5-15mm tall tufted of threads (filaments), branched only at their **bases**

Special requirements



1. view the threads that have **no** cross walls (**coenocytic**)
2. view the **constrictions** that occur just above the branches

Occurrences

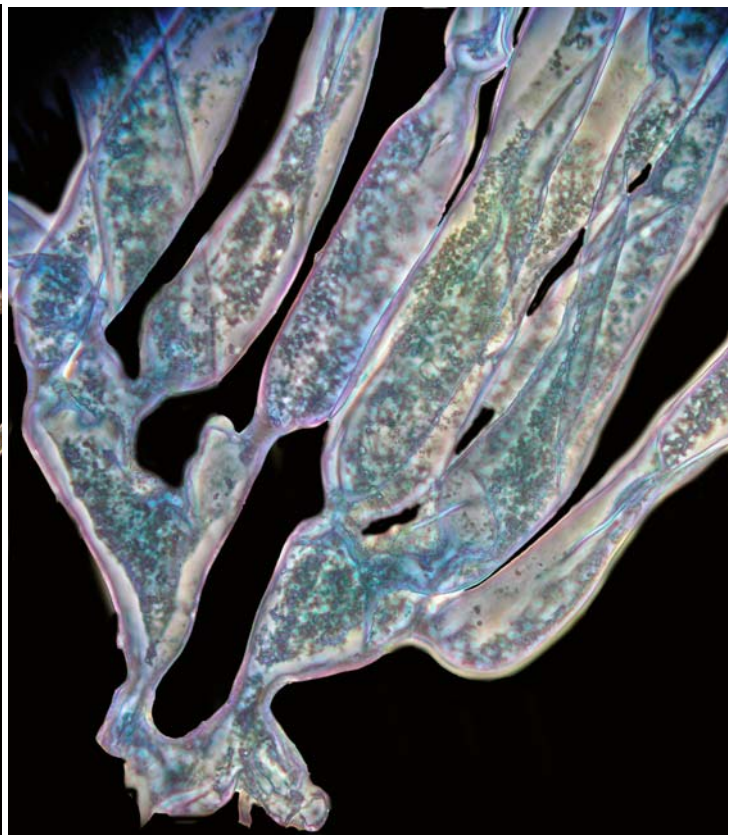
Usual Habitat

Kangaroo I. and Robe, S. Australia, possibly unrecognised and more widespread in shaded pools, on rock

Similar Species

superficially like many filamentous algae such as *Cladophora*, but filaments of *Pseudochlorodesmis* are **not** multicellular but coenocytic. Similar also to *Chlorodesmis*, but that genus has **broader** and **frequently** branched of filaments

Description in the Benthic Flora Part I, pages 242-245
Details of Anatomy



Preserved specimens of *Pseudochlorodesmis australis* (slide 7678) stained blue, at different microscope magnifications, showing the **basal**, forked (dichotomous) branching characteristic of the genus and constrictions at branch forks



*Pseudochlorodesmis
australis* (Womersley)
Womersley (A24431) from
Robe, S. Australia

* Descriptive names are inventions to aid identification, and are not commonly used
“Algae Revealed” R N Baldock, S Australian State Herbarium, June 2005