

SOUTHERN AUSTRALIAN SPECIES OF *RHODYMENIACEAE* AT A GLANCE

I. PLANT PARTS HOLLOW, INFLATED

IA. PLANTS MAINLY OF SINGLE, LARGE SACS



Gloiosaccion brownii



Webervanbossea tasmanensis



IB. PLANTS BEAD-LIKE (SEGMENTED)



segments clustered, papery when dry

Botryocladia sonderi



segments in branched chains

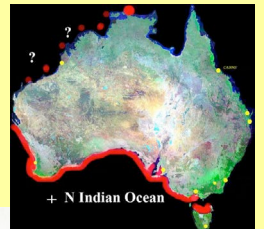


Coelarthrum opuntia

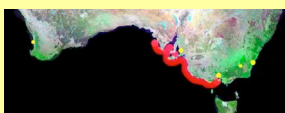
Coelarthrum cliftonii



segments of main branches (axes) sausage-shaped



Webervanbossea kaliformis

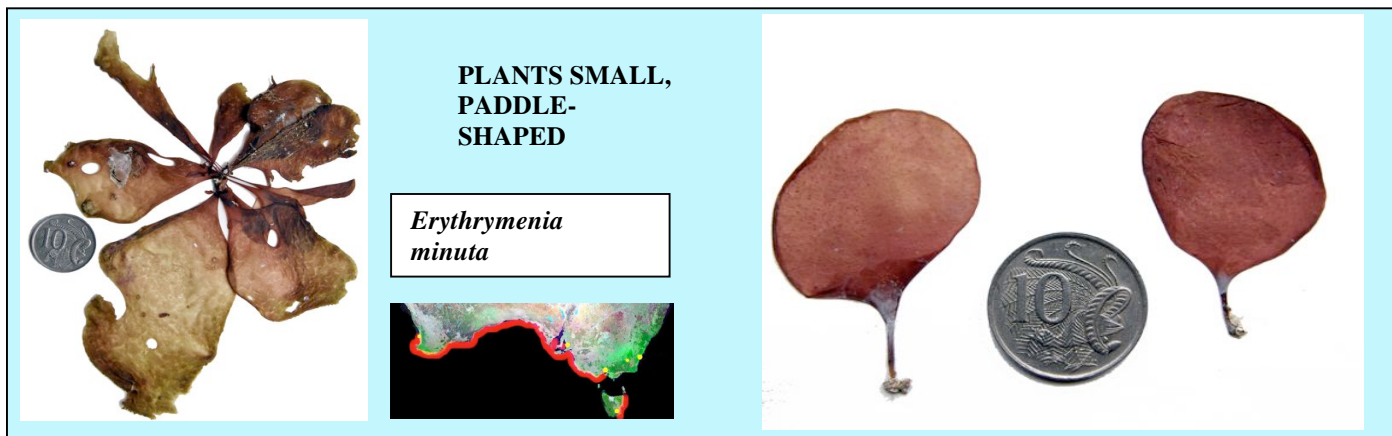


Webervanbossea splachnoides

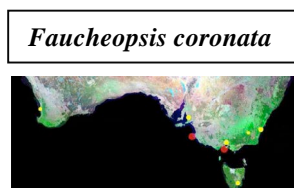
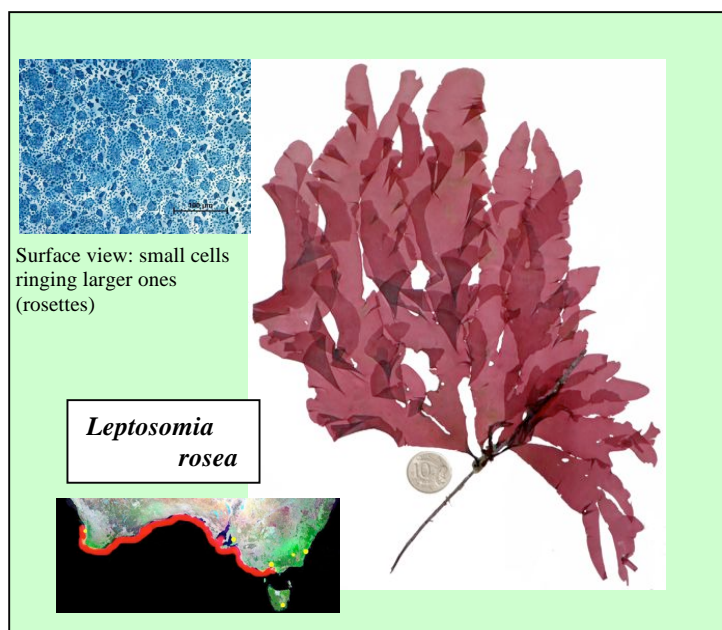
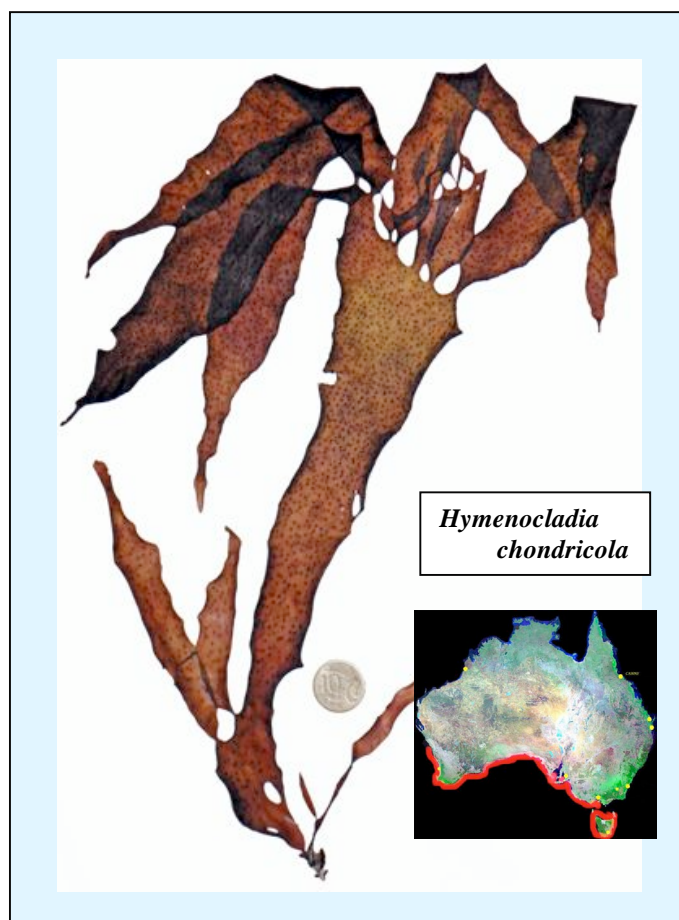


II. PLANTS FLAT-BRANCHED OR COMPRESSED

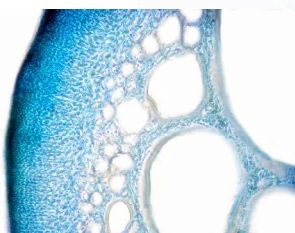
IIA. PLANTS GRISTLY OR TOUGH



PLANTS LARGER, STRAP-LIKE



RARE!



cross section



Continued next
page



NOTE: Saunders, G W & B McDonald (2010) *Botany* vol. 88, pp 639-667 using DNA sequencing found hidden species within existing members of *Rhodymenia*. This required renaming, as follows, some of the *Rhodymenia* species described in the Marine Benthic Flora of SA.



Halopeltis cuneata
as *Rhodymenia cuneata* in
the Marine Benthic Flora



Halopeltis cuneata
as *Rhodymenia*
halymenioides in the
Marine Benthic Flora



Rhodymenia obtusa
a hidden *species*, *Rhodymenia wilsonis* from
Victoria and Tasmania, has also probably
been included under this name

Halopeltis australis
as *Rhodymenia australis* in
the Marine Benthic Flora



warty female structures enlarged



Halopeltis verrucosa
as *Rhodymenia verrucosa* in
the Marine Benthic Flora

PLANTS FLAT-BRANCHED, GRISTLY OR TOUGH, AND STRAPLIKE

NOTE: the DNA sequencing by Saunders, G W & B McDonald (2010) *Botany* vol. 88, pp 639-667 found no evidence for removing the following *Rhodymenia* species from that genus



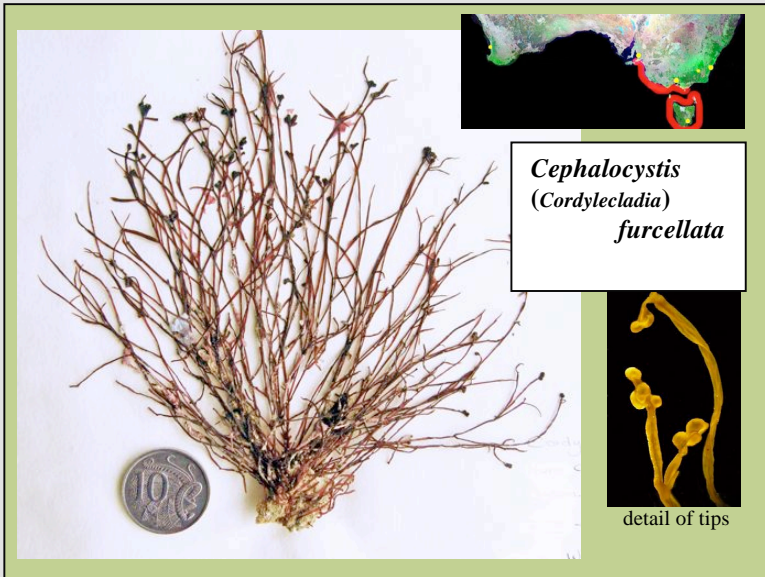
Rhodymenia prolificans



Rhodymenia leptophylla



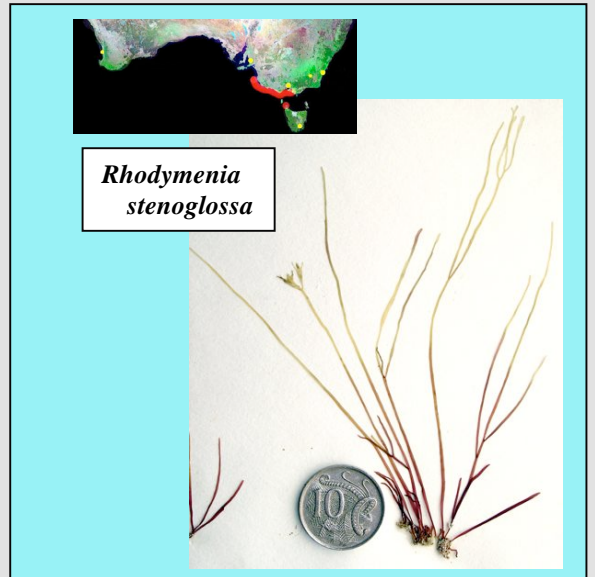
PLANTS MORE WIRY THAN STRAP-LIKE



Cephalocystis (Cordylecladia) furcellata



detail of tips



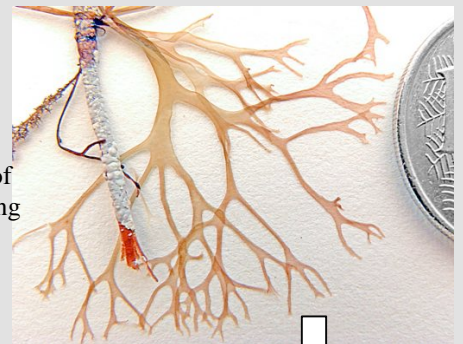
Rhodymenia stenoglossa



Hymenocladia filiformis



detail of branching



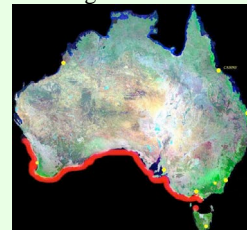
Continued next page



PLANTS WITH FEATHERY (PINNATE) BRANCHING



detail of branching



Hymenocladia usnea



detail of branching



Hymenocladia divaricata

IIB. PLANTS SLIMY OR SOFT



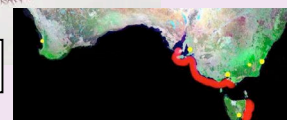
Gloiocladia australis



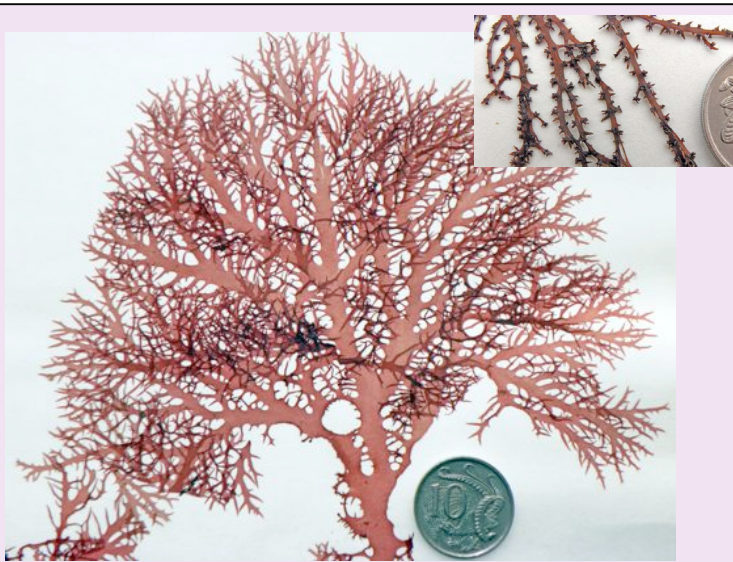
Gloiocladia spp continued next page



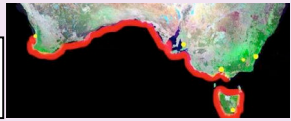
detail of mature female parts (cystocarps)



Gloiocladia



*Gloiocladia
halymenioides*



*Gloiocladia
polycarpa*



III. PLANTS MINUTE, PARASITIC ON RHODYMENIA

*Rhodymeniocolax
austrina*

