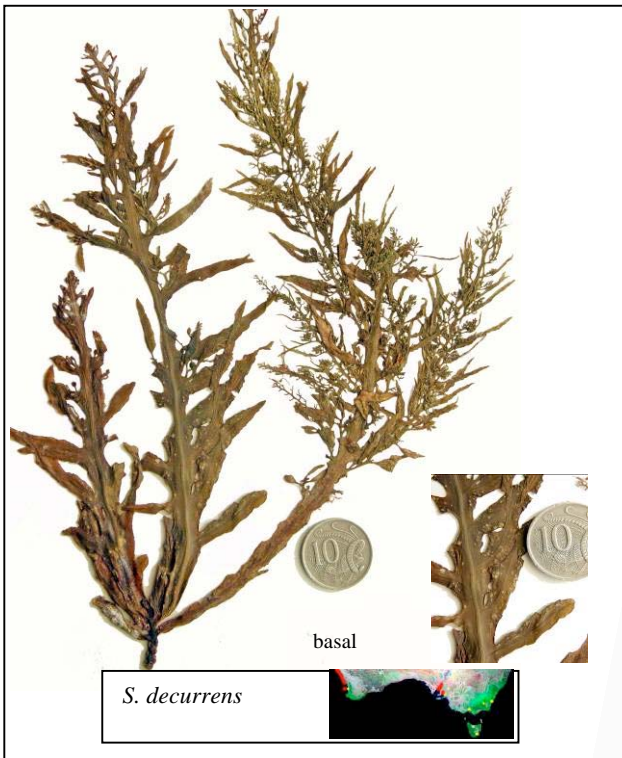
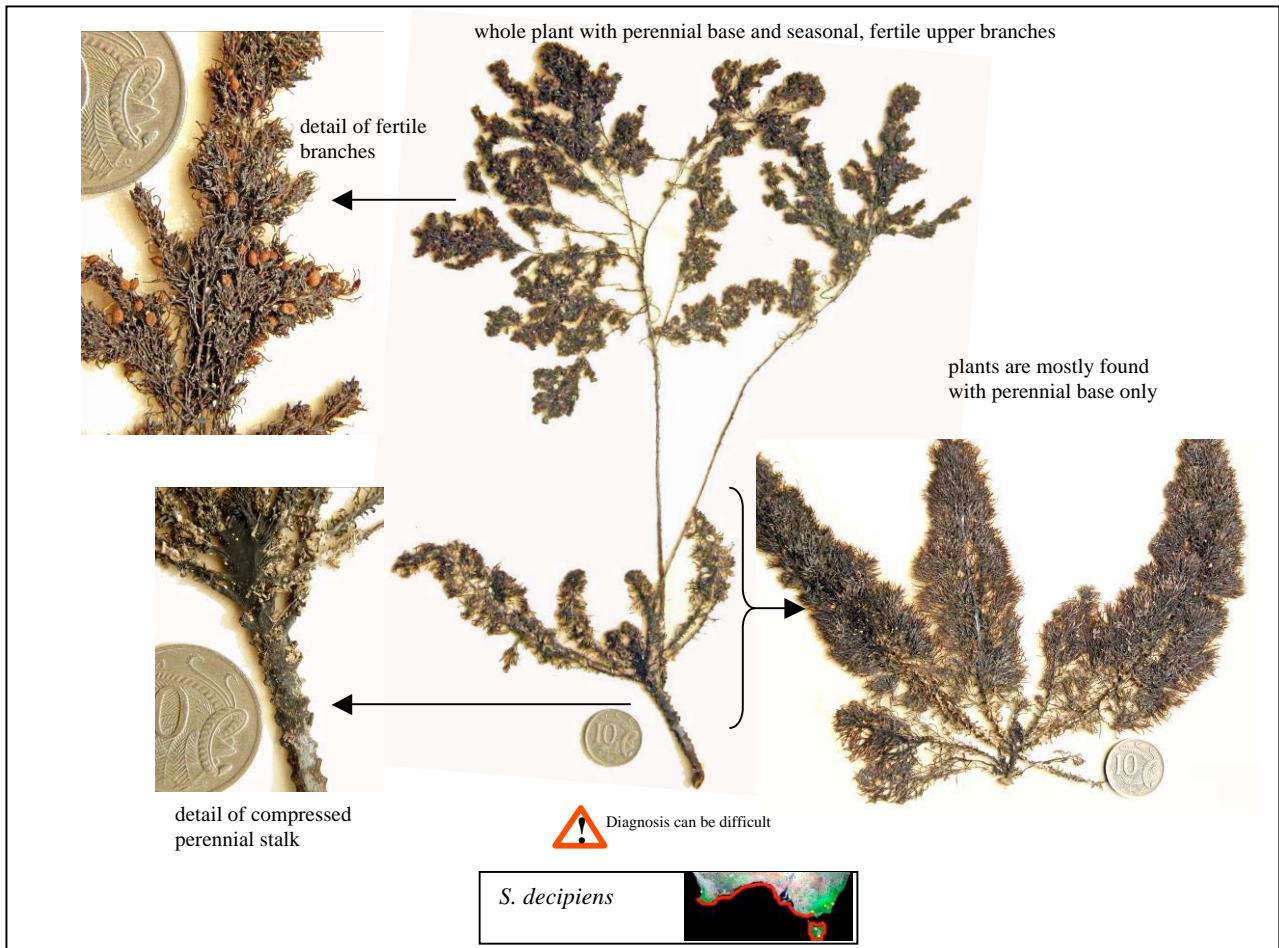
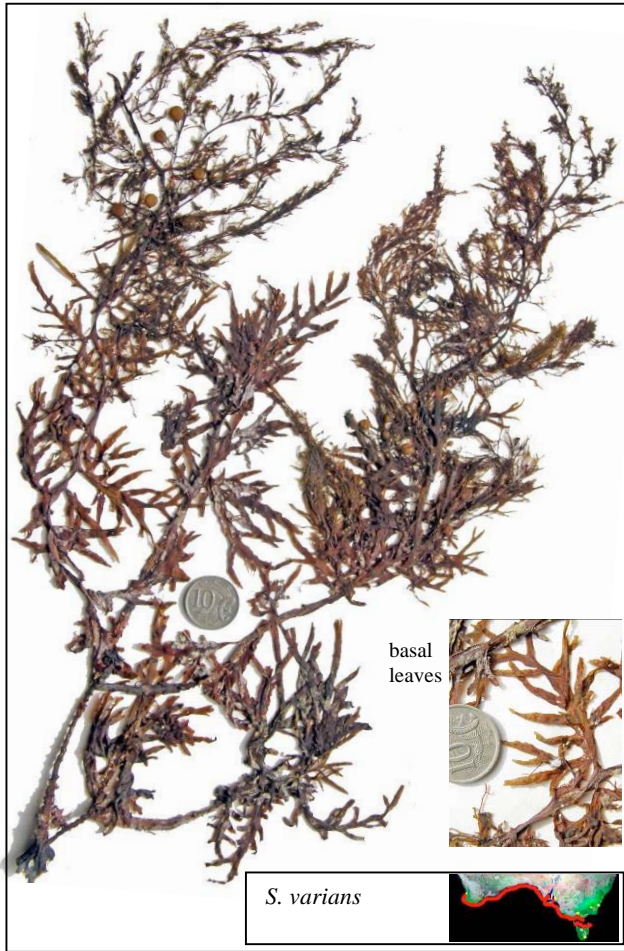


## SOUTHERN AUSTRALIAN SPECIES OF *SARGASSUM* AT A GLANCE

Only superficial key features are displayed. The 10c piece used as a scale is 24mm or almost 1 inch in diameter

### I. Sub-genus: *Phyllotrichia* — lower leaves narrow and divided





**II. Sub-genus: *Arthrophyucus* —  
 lower leaves generally  
 undivided and much larger  
 than upper ones.  
 Axes 3-cornered in cross  
 section**

