

Schizoseris tasmanica

Lin & Kraft

45.880.50

Techniques needed and shape



MACRO
PLANT



Classification

Phylum: Rhodophyta; Family: Delesseriaceae; Tribe: Nitophylloideae;
Group: Myriogramme

*Descriptive name

frilly blades

Features



plants rose-red, 100-350mm tall, 50-200mm wide, usually of a *single* thin leafy blade with densely *ruffled* edges, and practically *no visible* veins; basally a small, thin *stalk* about 20mm long

Occurrences

only known from SE Tasmania

Usual Habitat

on rock from 6-15m deep

Similar Species

Schizoseris hymenena, but that species has branched stalks, more blades and visible veins

Description in the Benthic Flora

Part IIID, pages 114-116

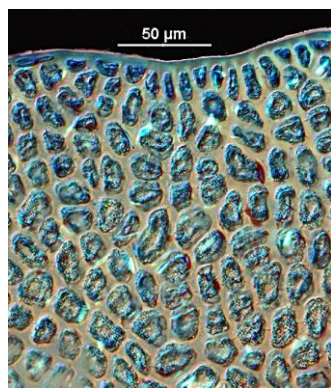
Special Requirements

view microscopically to find:

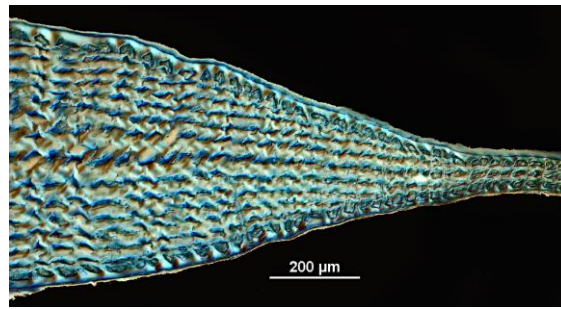


- in surface view: *fringes* of dividing cells at blade edges, blades are *one cell thick* except at veins, stalks and reproductive organs
- in pustule-like female structures scattered on blades: slightly off-centre openings (ostioles)
- in sporangial plants: tetrasporangia in *scattered* patches (sori) on blades

Details of Anatomy

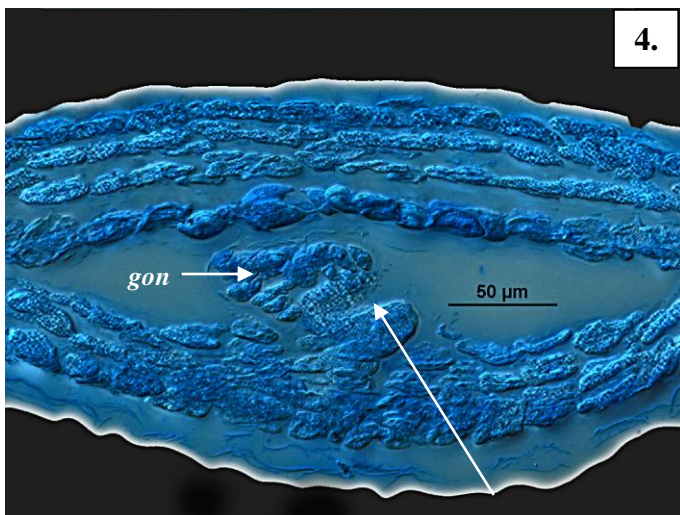
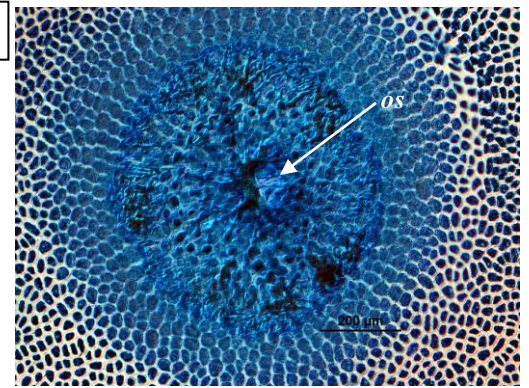


1.

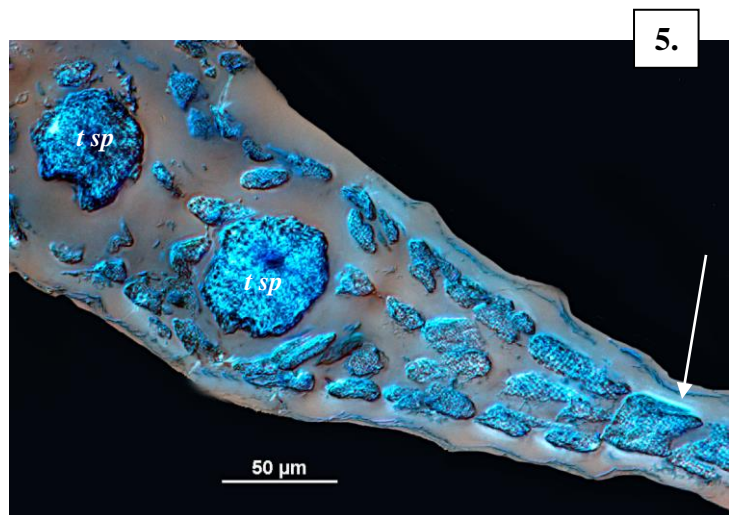


2.

3.



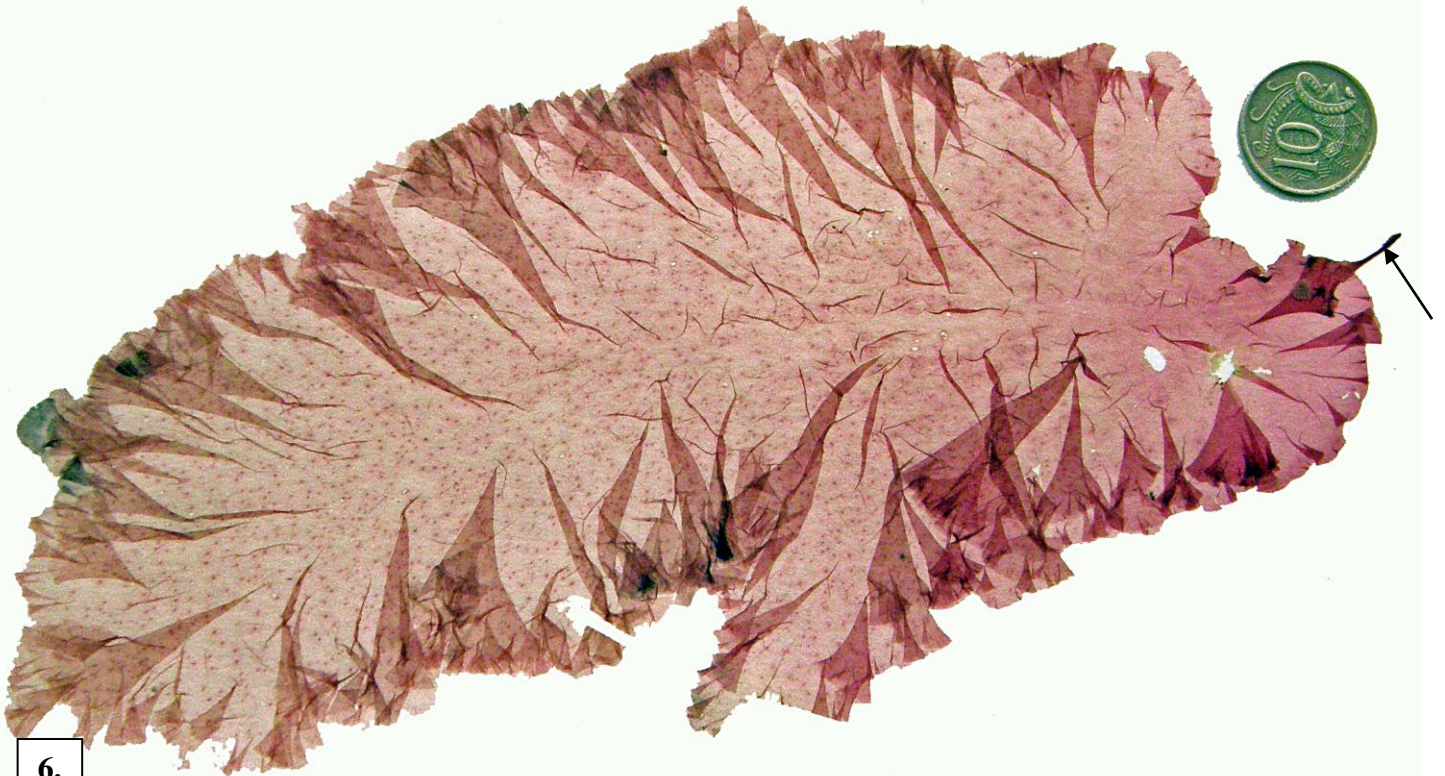
4.



5.

Schizoseris tasmanica Lin & Kraft stained blue and viewed microscopically

1. blade edge, surface view: fringe of dividing cells continuing the growth of the blade (slide 17704)
2. cross section through a vein: tiers of cells decreasing in numbers towards the blade edge (slide 17532)
3. surface view of a female structure (cystocarp): slightly off-centre opening (ostiole, *os*) (A68055 slide 17751)
4. cross section through young cystocarp: sterile cell group (*arrowed*), developing fertile cells (gonimoblast, *gon*) (slide 17751)
5. cross section, sporangial plant : 2 developing tetrasporangia (*t sp*), sterile part of blade (*arrowed*) one cell thick (slide 17702)

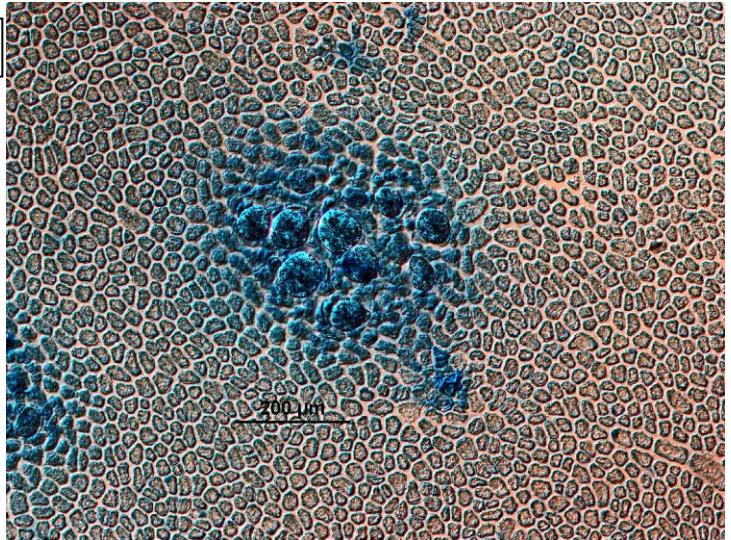


6.

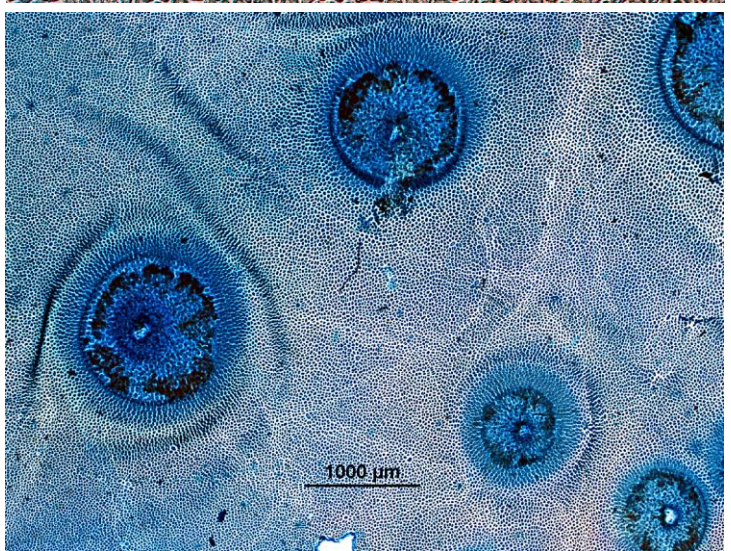


7.

8.



9.



6, 7. Two magnifications of *Schizoseris tasmanica* Lin & Kraft (A68024) showing the small basal stalk (**arrowed**), obscure veins and scattered patches of tetrasporangia
 8, 9. microscope surface views of specimens stained blue:
 8. patch (sorus) of tetrasporangia (slide 17765)
 9. cystocarps (slide 17751)

* Descriptive names are inventions to aid identification, and are not commonly used
 "Algae Revealed", R N Baldock, State Herbarium, S Australia, January 2009; edited July 2014