



**Techniques needed**

**Classification**

Phylum: Chlorophyta; Order: Ulvales; Family: Ulvaceae

**\*Descriptive name**

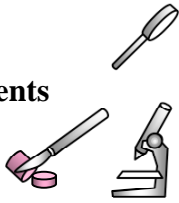
micro-toothed sea lettuce

**Features**

plants light green, often a *single* sheet-like blade, 100-300mm tall, as *long as broad*, surface usually *unruffled*, irregularly divided, edges with *minute* teeth

**Special requirements**

view microscopically



1. blades consist of 2 sheets of cells, *some* edges with *minute* teeth or spines
2. cross section of blade middle shows cells are *elongate* (L/B = 2-3) and *tapering*

**Occurrences**

worldwide in temperate or warm seas. In southern Australia, from Yorke Peninsula to Victoria, and probably more widespread

**Usual Habitat**

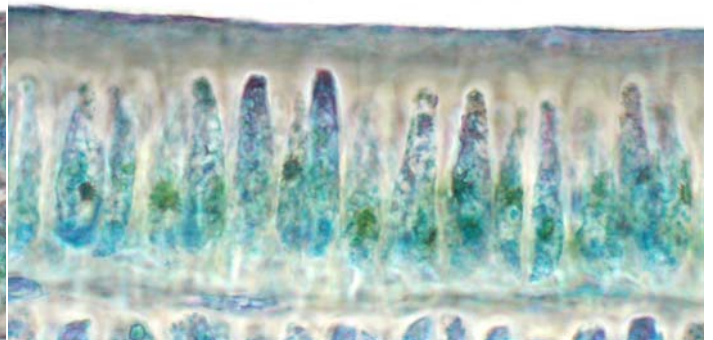
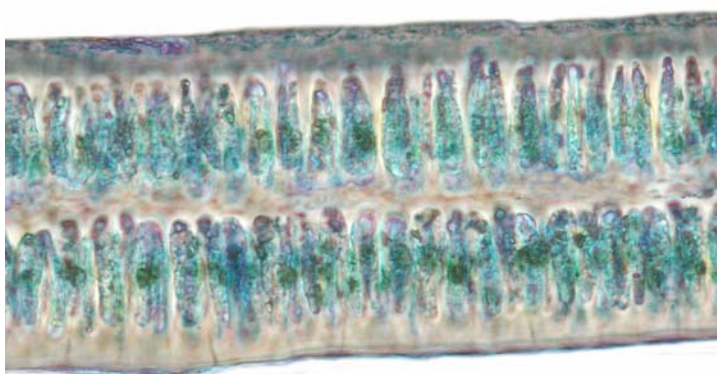
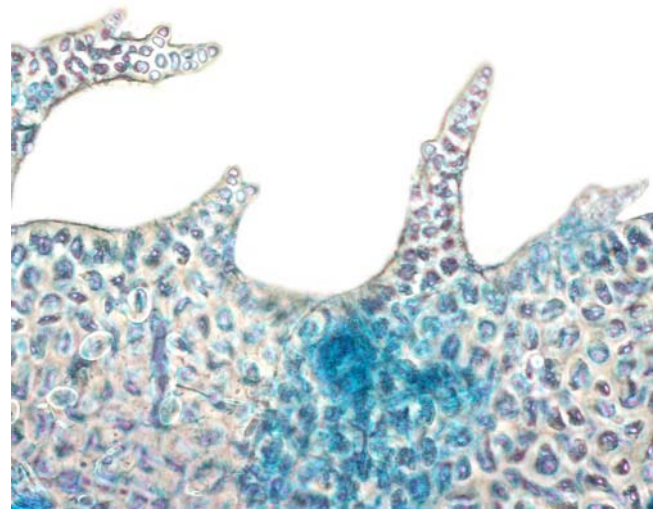
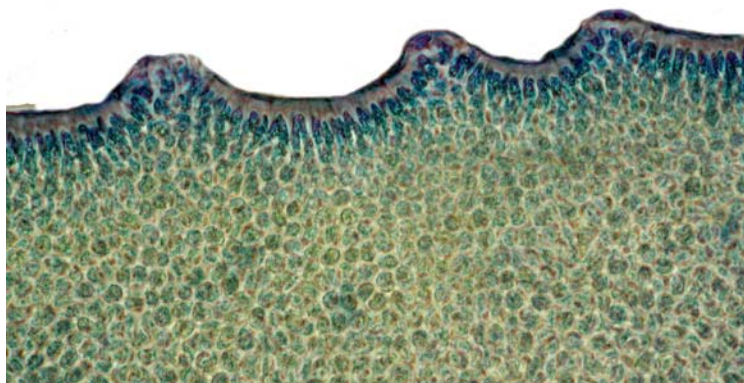
coasts of *low to moderate wave action*

**Similar Species**

similar to *Ulva lactuca* but that species is rarer and the margins are *not* minutely toothed.

**Description in the Benthic Flora** Part I, pages 142-145.

**Details of Anatomy**



*Ulva rigida* stained blue and viewed microscopically

- 1, 2. blade edges with microscopic teeth or branched spines (slide 9027)
- 3, 4. cross sections at different magnifications showing elongate and tapering cells



*Ulva rigida* C Agardh, (A51839) from shallow water at Coobowie, S. Australia

\* Descriptive names are inventions to aid identification, and are not commonly used  
"Algae Revealed" R N Baldock, S Australian State Herbarium, October 2003, additions June 2006, October 2009